

## CLIC5 monoclonal antibody (M03), clone 1E6

Catalog # : H00053405-M03

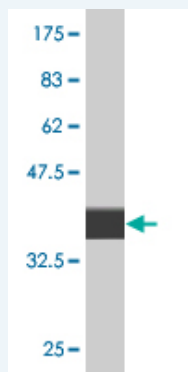
規格 : [ 100 ug ]

[List All](#)

### Specification

<b>Product Description:</b>	Mouse monoclonal antibody raised against a partial recombinant CLIC5.
<b>Immunogen:</b>	CLIC5 (NP_058625.2, 91 a.a. ~ 190 a.a) partial recombinant protein with GST tag. MW of the GST tag alone is 26 KDa.
<b>Sequence:</b>	FLEETLTPEKYPKLAAKHRESNTAGIDIFSKFSAYIKNTKQQNNAALERGLTKALKKLLDDYLNTPLPEEIDANTCGEDKGSRRKFLDGDDELTLADCNLLP
<b>Host:</b>	Mouse
<b>Reactivity:</b>	Human
<b>Isotype:</b>	IgG2a Kappa

**Quality Control Testing:** Antibody Reactive Against Recombinant Protein.



Western Blot detection against Immunogen (36.74 KDa) .

**Storage Buffer:** In 1x PBS, pH 7.4

**Storage Instruction:** Store at -20°C or lower. Aliquot to avoid repeated freezing and thawing.

**MSDS:** [Download](#)

**Datasheet:** [Download](#)

### Publication Reference

1. [CLIC5A, a component of the ezrin-podocalyxin complex in glomeruli, is a determinant of podocyte integrity.](#) Wegner B, Al-Momany A, Kulak SC, Kozłowski K, Obeidat M, Jahroudi N, Paes J, Berryman M, Ballermann BJ. *Am J Physiol Renal Physiol.* 2010 Mar 24. [Epub ahead of print]

### Applications

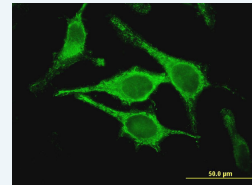
**Western Blot (Recombinant protein)**

[Protocol Download](#)

### Application Image

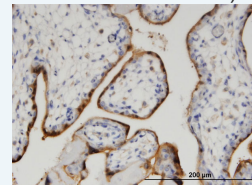
Western Blot (Recombinant protein)

Immunofluorescence



[enlarge](#)

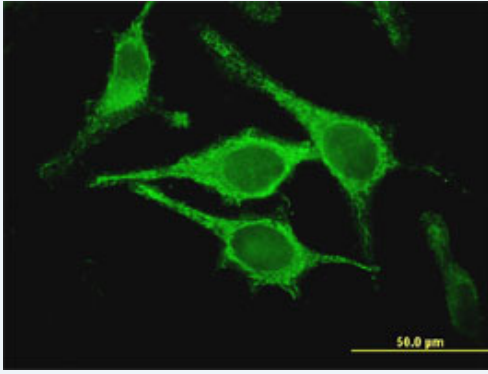
Immunohistochemistry (Formalin/PFA-fixed paraffin-embedded sections)



[enlarge](#)

ELISA

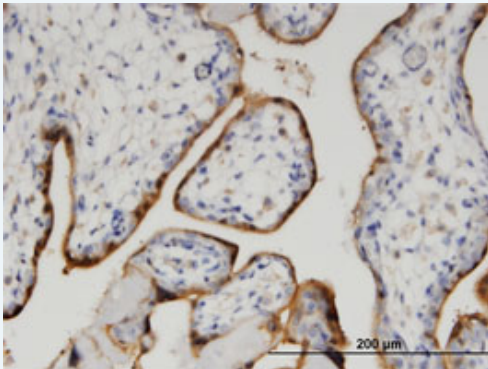
## Immunofluorescence



[enlarge this image](#)

Immunofluorescence of monoclonal antibody to CLIC5 on HeLa cell . [antibody concentration 20 ug/ml]

## Immunohistochemistry (Formalin/PFA-fixed paraffin-embedded sections)



[enlarge this image](#)

Immunoperoxidase of monoclonal antibody to CLIC5 on formalin-fixed paraffin-embedded human placenta. [antibody concentration 3 ug/ml]

 [Protocol Download](#)

## ELISA

## Gene Information

Entrez GeneID: [53405](#)

GeneBank Accession#: [NM\\_016929](#)

Protein Accession#: [NP\\_058625.2](#)

Gene Name: CLIC5

Gene Alias: CLIC5B,FLJ90663,MST130,MSTP130,dJ447E21.4

Gene Description: chloride intracellular channel 5

Omim ID: [607293](#)

Gene Ontology: [Hyperlink](#)

**Gene Summary:** Chloride intracellular channels are involved in chloride ion transport within various subcellular compartments. CLIC5 specifically associates with the cytoskeleton of placenta microvilli.[supplied by OMIM]

Other Designations: OTTHUMP00000016538,chloride intracellular channel 5A

## Related Disease

---

[服務條款](#) | [隱私權政策](#) | [著作及商標](#) | [網站地圖](#)

©2021 亞諾法生技股份有限公司 Abnova Corporation. 版權所有.