

## SHC3 monoclonal antibody (M04), clone 1C11

Catalog # : H00053358-M04

規格 : [ 100 ug ]

[List All](#)

### Specification

**Product Description:** Mouse monoclonal antibody raised against a partial recombinant SHC3.

**Immunogen:** SHC3 (NP\_058544.2, 381 a.a. ~ 480 a.a) partial recombinant protein with GST tag. MW of the GST tag alone is 26 KDa.

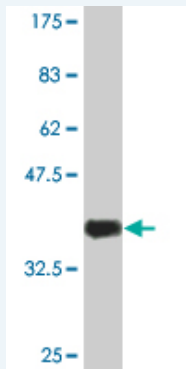
**Sequence:** QGRHLGDTFGEDWQQTPLRQGSSDIYSTPEGKLVHAPTGEAPTYVNT  
QQIPPQAWPAAVSSAESSPRKDLFDMKPFEDALKNQPLGPVLSKAASVE  
CISP

**Host:** Mouse

**Reactivity:** Human

**Isotype:** IgG2a Kappa

**Quality Control Testing:** Antibody Reactive Against Recombinant Protein.



Western Blot detection against Immunogen (36.74 KDa) .

**Storage Buffer:** In 1x PBS, pH 7.4

**Storage Instruction:** Store at -20°C or lower. Aliquot to avoid repeated freezing and thawing.

**MSDS:** [Download](#)

**Datasheet:** [Download](#)

### Applications

**Western Blot (Recombinant protein)**

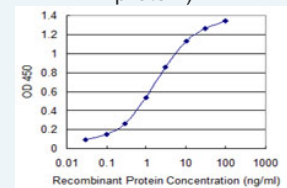
[Protocol Download](#)

**Sandwich ELISA (Recombinant protein)**

### Application Image

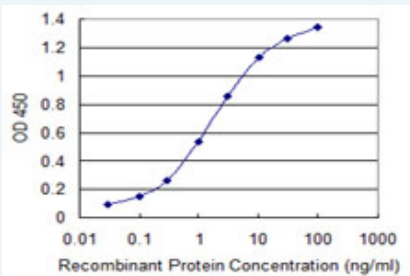
Western Blot (Recombinant protein)

Sandwich ELISA (Recombinant protein)




[enlarge](#)

ELISA



Detection limit for recombinant GST tagged SHC3 is 0.03 ng/ml as a capture antibody.

 [Protocol Download](#)

## ELISA

### Gene Information

**Entrez GeneID:** [53358](#)

**GeneBank** [NM\\_016848](#)

**Accession#:**

**Protein** [NP\\_058544.2](#)

**Accession#:**

**Gene Name:** SHC3

**Gene Alias:** N-Shc,NSHC,RAI,SHCC

**Gene Description:** SHC (Src homology 2 domain containing) transforming protein 3

**Omim ID:** [605263](#)

**Gene Ontology:** [Hyperlink](#)

**Other Designations:** OTTHUMP00000021614,neuronal Shc,src homology 2 domain containing transforming protein C3,src homology 2 domain-containing transforming protein C3

### Gene Pathway

[Chemokine signaling pathway](#) [Chronic myeloid leukemia](#) [ErbB signaling pathway](#)  
[Focal adhesion](#) [Glioma](#) [Insulin signaling pathway](#) [Natural killer cell mediated cytotoxicity](#)  
[Neurotrophin signaling pathway](#)

### Related Disease

[Genetic Predisposition to Disease](#) [Tobacco Use Disorder](#)

[服務條款](#) | [隱私權政策](#) | [著作及商標](#) | [網站地圖](#)

©2016 亞諾法生技股份有限公司 Abnova Corporation. 版權所有.