

TUBA8 purified MaxPab rabbit polyclonal antibody (D01P) MaxPab®

Catalog # : H00051807-D01P

規格 : [100 ug]

[List All](#)

Specification

Product Description: Rabbit polyclonal antibody raised against a full-length human TUBA8 protein.

Immunogen: TUBA8 (NP_061816.1, 1 a.a. ~ 449 a.a) full-length human protein.

Sequence:
 MRECISVHVGQAGVQIGNACWELFCLEHGIQADGTFDAQASKINDDDSF
 TFFFSETGNGKHVPRAVMIDLEPTVDEVVAGTYRQLFHPEQLITGKED
 AANNYARGHYTVGKESIDLVLDRIRKLTDACSGLQGFLIFHSFGGGTGSG
 FTSLLMERLSLDYGKKSLEFAIYPAPQVSTAVVEPYNSILTTHTLEHSD
 CAFMVDNEAIYDICRRNLDIERPTYTNLNRLISQVSSITASLRFDGALNVDL
 TEFQTNLVPYPRIFPLVTYAPIISAEKAYHEQLSVAEITSSCFEPNSQMVK
 CDPRHGKYMCCMLYRGDWWPKDVNVAIAAIKTKRTIQFVDWCPTGFKV
 GINYQPPTWPGGDLAKVQRAVCMLSNNTAIAEAWARLDHKFDLMYAKR
 AFVHWYVYVGEEMEEGEF SEAREDLAALAEKDYEEVGTDSFEENEGEF

Host: Rabbit

Reactivity: Human

Quality Control Testing: Antibody reactive against mammalian transfected lysate.

Storage Buffer: In 1x PBS, pH 7.4

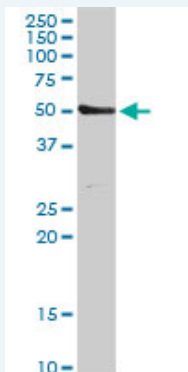
Storage Instruction: Store at -20°C or lower. Aliquot to avoid repeated freezing and thawing.

MSDS: [Download](#)

Datasheet: [Download](#)

Applications

Western Blot (Tissue lysate)



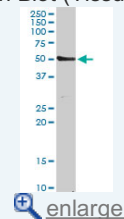
TUBA8 MaxPab rabbit polyclonal antibody. Western Blot analysis of TUBA8 expression in human kidney.

[Protocol Download](#)

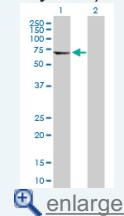
Western Blot (Transfected lysate)

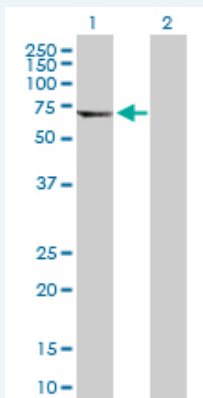
Application Image

Western Blot (Tissue lysate)




Western Blot (Transfected lysate)





Western Blot analysis of TUBA8 expression in transfected 293T cell line ([H00051807-T02](#)) by TUBA8 MaxPab polyclonal antibody.

Lane 1: TUBA8 transfected lysate(50.10 KDa).
Lane 2: Non-transfected lysate.

 [Protocol Download](#)

Gene Information

Entrez GeneID: [51807](#)

GeneBank Accession#: [NM_018943.1](#)

Protein Accession#: [NP_061816.1](#)

Gene Name: TUBA8

Gene Alias: TUBAL2

Gene Description: tubulin, alpha 8

Omim ID: [605742](#)

Gene Ontology: [Hyperlink](#)

Other Designations: OTTHUMP00000196216,tubulin, alpha-like 2

Gene Pathway

[Gap junction Pathogenic Escherichia coli infection - EHEC](#)

Related Disease

[Bipolar Disorder](#) [Cardiovascular Diseases](#) [Diabetes Mellitus, Type 2](#) [Edema](#) [Schizophrenia](#)
[Schizophrenia](#)