

## RAB23 (Human) Matched Antibody Pair

Catalog # : H00051715-AP21

規格 : [ 1 Set ]

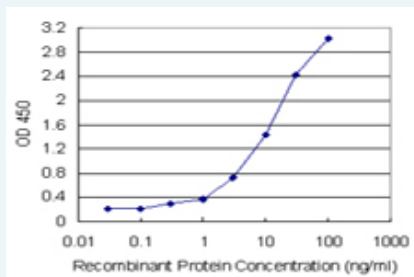
[List All](#)

### Specification

**Product Description:** This antibody pair set comes with matched antibody pair to detect and quantify protein level of human RAB23.

**Reactivity:** Human

**Quality Control Testing:** Standard curve using recombinant protein ( H00051715-P01 ) as an analyte.



Sandwich ELISA detection sensitivity ranging from 0.3 ng/ml to 100 ng/ml.

**Supplied Product:** Antibody pair set content:  
 1. Capture antibody: rabbit MaxPab® affinity purified polyclonal anti-RAB23 (100 ug)  
 2. Detection antibody: mouse polyclonal anti-RAB23 (40 ul)  
 \*Reagents are sufficient for at least 3-5 x 96 well plates using recommended protocols.

**Storage Instruction:** Store reagents of the antibody pair set at -20°C or lower. Please aliquot to avoid repeated freeze thaw cycle. Reagents should be returned to -20°C storage immediately after use.

**MSDS:**  [Download](#)

### Applications

ELISA Pair (Recombinant protein)

 [Protocol Download](#)

### Gene Information

**Entrez GeneID:** [51715](#)

**Gene Name:** RAB23

**Gene Alias:** DKFZp781H0695,HSPC137,MGC8900

**Gene Description:** RAB23, member RAS oncogene family

**Omim ID:** [201000](#), [606144](#)

**Gene Ontology:** [Hyperlink](#)

**Gene Summary:** The protein encoded by this gene belongs to the small GTPase superfamily, Rab family. It may be involved in small GTPase mediated signal transduction and intracellular protein transportation. Alternative splicing occurs at this locus and two transcript variants encoding the same protein have been identified. [provided by RefSeq]

**Other Designations:** OTTHUMP00000016667,OTTHUMP00000040021,RAB family small GTP binding protein RAB 23,Ras-related protein Rab-23

#### Gene Pathway

[Hedgehog signaling pathway](#)

---

[服務條款](#) | [隱私權政策](#) | [著作及商標](#) | [網站地圖](#)

©2016 亞諾法生技股份有限公司 Abnova Corporation. 版權所有.