

CPSF3 monoclonal antibody (M01), clone 6E6

Catalog # : H00051692-M01

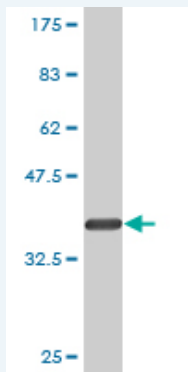
規格 : [100 ug]

List All

Specification

Product Description:	Mouse monoclonal antibody raised against a partial recombinant CPSF3.
Immunogen:	CPSF3 (NP_057291, 585 a.a. ~ 684 a.a) partial recombinant protein with GST tag. MW of the GST tag alone is 26 KDa.
Sequence:	LEVQSNPKIRKGAVQKVKSKLEMHVYSKRLEIMLQDIFGEDCVSVKDDSSILSVTVDGKTANLNLETRTVECEESEDESREMMVELAAQRLYEALTPVH
Host:	Mouse
Reactivity:	Human, Mouse, Rat
Isotype:	IgG2a Kappa

Quality Control Testing: Antibody Reactive Against Recombinant Protein.



Western Blot detection against Immunogen (36.74 KDa) .

Storage Buffer: In 1x PBS, pH 7.4

Storage Instruction: Store at -20°C or lower. Aliquot to avoid repeated freezing and thawing.

MSDS: [Download](#)

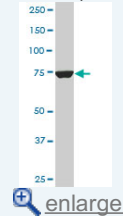
Datasheet: [Download](#)

Applications

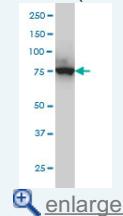
Western Blot (Cell lysate)

Application Image

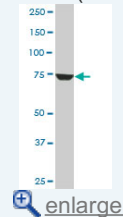
Western Blot (Cell lysate)



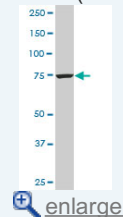
Western Blot (Cell lysate)



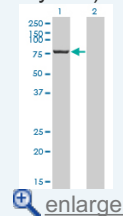
Western Blot (Cell lysate)



Western Blot (Cell lysate)

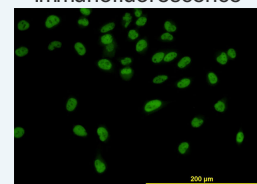


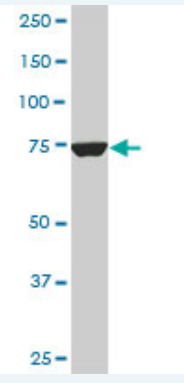
Western Blot (Transfected lysate)



Western Blot (Recombinant protein)

Immunofluorescence

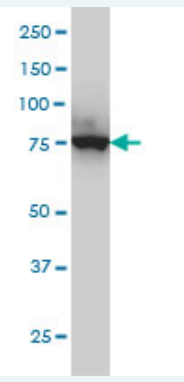




CPSF3 monoclonal antibody (M01), clone 6E6. Western Blot analysis of CPSF3 expression in PC-12(Cat # L012V1).

[Protocol Download](#)

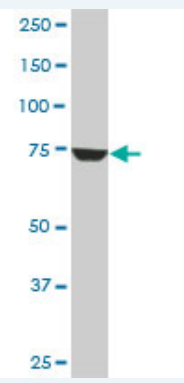
Western Blot (Cell lysate)



CPSF3 monoclonal antibody (M01), clone 6E6 Western Blot analysis of CPSF3 expression in HeLa S3 NE (Cat # L013V3).

[Protocol Download](#)

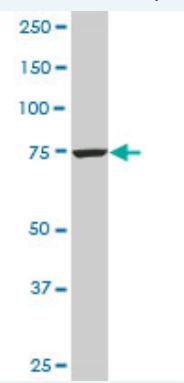
Western Blot (Cell lysate)



CPSF3 monoclonal antibody (M01), clone 6E6. Western Blot analysis of CPSF3 expression in Raw 264.7(Cat # L024V1).

[Protocol Download](#)

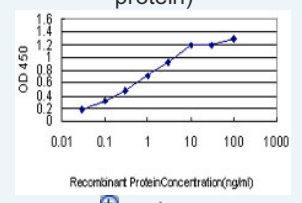
Western Blot (Cell lysate)



CPSF3 monoclonal antibody (M01), clone 6E6. Western Blot analysis of CPSF3 expression in NIH/3T3(Cat # L018V1).

[enlarge](#)

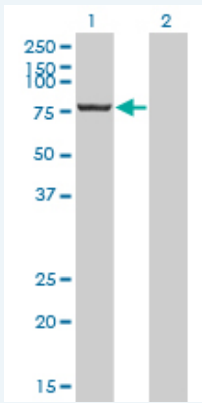
Sandwich ELISA (Recombinant protein)



[enlarge](#)

ELISA

Western Blot (Transfected lysate)




Western Blot analysis of CPSF3 expression in transfected 293T cell line by CPSF3 monoclonal antibody (M01), clone 6E6.

Lane 1: CPSF3 transfected lysate(77.5 KDa).

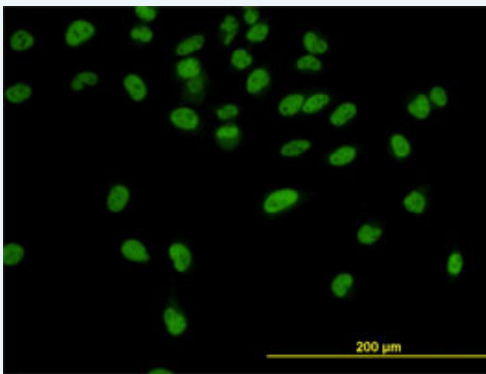
Lane 2: Non-transfected lysate.


 Protocol Download

Western Blot (Recombinant protein)

 Protocol Download

Immunofluorescence

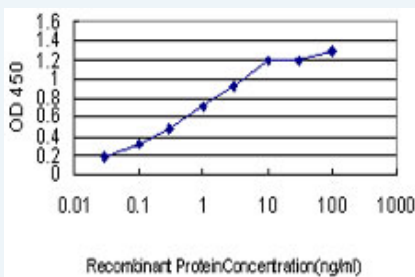


 enlarge this image

Immunofluorescence of monoclonal antibody to CPSF3 on HeLa cell. [antibody concentration 10 ug/ml]

 Protocol Download

Sandwich ELISA (Recombinant protein)



Detection limit for recombinant GST tagged CPSF3 is approximately 0.1 ng/ml as a capture antibody.

 Protocol Download

ELISA

Gene Information

Entrez GeneID: [51692](#)

GeneBank [NM_016207](#)

Accession#:

Protein [NP_057291](#)

Accession#:

Gene Name: CPSF3

Gene Alias: CPSF,CPSF-73,CPSF73,YSH1

Gene Description: cleavage and polyadenylation specific factor 3, 73kDa

Omim ID: [606029](#)

Gene Ontology: [Hyperlink](#)

Other Designations: cleavage and polyadenylation specificity factor 3

[服務條款](#) | [隱私權政策](#) | [著作及商標](#) | [網站地圖](#)

©2016 亞諾法生技股份有限公司 Abnova Corporation. 版權所有.