



MIR16 monoclonal antibody (M04), clone 2H6

Catalog # : H00051573-M04

規格 : [100 ug]

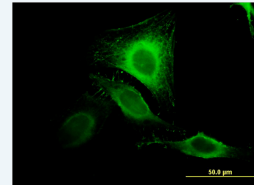
List All


Specification

| | |
|---------------------------------|----------------------------------------------------------------------------------------------------------------------|
| Product Description: | Mouse monoclonal antibody raised against a partial recombinant MIR16. |
| Immunogen: | MIR16 (NP_057725, 31 a.a. ~ 138 a.a) partial recombinant protein with GST tag. MW of the GST tag alone is 26 KDa. |
| Sequence: | ACLLTGSLFVLLRVFSFEPVPSRCLQVLKPRDRISAIAHRGGSHDAPEN TLAAIRQAAKNGATGVELDIEFTSDGIPVLMHDNTVDRTTDTGTGRLCDLT FEQIRKLN |
| Host: | Mouse |
| Reactivity: | Human |
| Isotype: | IgG2a Kappa |
| Quality Control Testing: | Antibody Reactive Against Recombinant Protein. |
| Storage Buffer: | In 1x PBS, pH 7.4 |
| Storage Instruction: | Store at -20°C or lower. Aliquot to avoid repeated freezing and thawing. |
| MSDS: |  Download |
| Datasheet: |  Download |

Application Image

Immunofluorescence

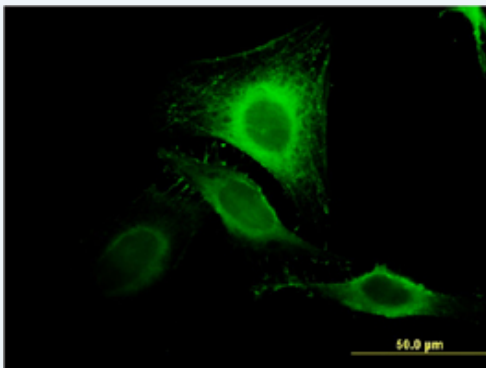



 [enlarge](#)

ELISA


Applications

Immunofluorescence



 [enlarge this image](#)

Immunofluorescence of monoclonal antibody to GDE1 on HeLa cell . [antibody concentration 10 ug/ml]

 [Protocol Download](#)

ELISA

Gene Information

Entrez GeneID: [51573](#)

GeneBank
Accession#: [NM_016641](#)

Protein
Accession#: [NP_057725](#)

Gene Name: GDE1

Gene Alias: 363E6.2,MIR16

Gene
Description: glycerophosphodiester phosphodiesterase 1

Omim ID: [605943](#)

Gene Ontology: [Hyperlink](#)

Other
Designations: membrane interacting protein of RGS16

Gene Pathway

[Glycerophospholipid metabolism](#)

[服務條款](#) | [隱私權政策](#) | [著作及商標](#) | [網站地圖](#)

©2016 亞諾法生技股份有限公司 Abnova Corporation. 版權所有.