

## VGLL1 monoclonal antibody (M01), clone 3C7

Catalog # : H00051442-M01

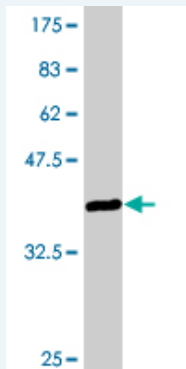
規格 : [ 100 ug ]

[List All](#)

### Specification

<b>Product Description:</b>	Mouse monoclonal antibody raised against a partial recombinant VGLL1.
<b>Immunogen:</b>	VGLL1 (NP_057351.1, 1 a.a. ~ 100 a.a) partial recombinant protein with GST tag. MW of the GST tag alone is 26 KDa.
<b>Sequence:</b>	MEEMKKTAIRLPKGGKQKPIKTEWNSRCVLFTYFQGDISSVDEHFSRALS NIKSPQELTPSSQSEGVMMLKNDDSMSPNQWRYSSPWTKPQPEVPVTNR AA
<b>Host:</b>	Mouse
<b>Reactivity:</b>	Human
<b>Isotype:</b>	IgG1 Kappa

**Quality Control Testing:** Antibody Reactive Against Recombinant Protein.



Western Blot detection against Immunogen (36.74 KDa) .

**Storage Buffer:** In 1x PBS, pH 7.4

**Storage Instruction:** Store at -20°C or lower. Aliquot to avoid repeated freezing and thawing.

**MSDS:** [Download](#)

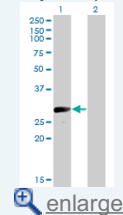
**Datasheet:** [Download](#)

### Applications

Western Blot (Transfected lysate)

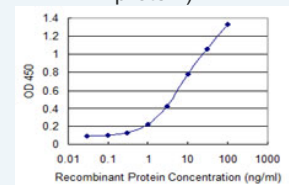
### Application Image

Western Blot (Transfected lysate)



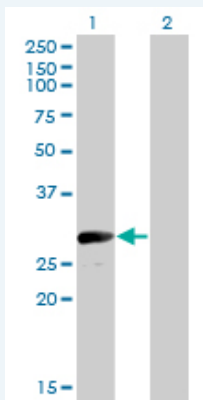
Western Blot (Recombinant protein)

Sandwich ELISA (Recombinant protein)



[enlarge](#)

ELISA



Western Blot analysis of VGLL1 expression in transfected 293T cell line by VGLL1 monoclonal antibody (M01), clone 3C7.

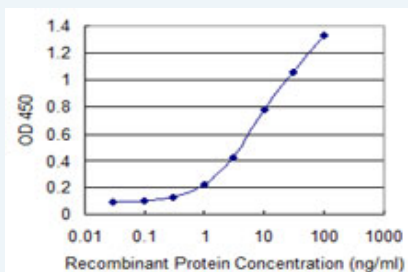
Lane 1: VGLL1 transfected lysate(28.7 KDa).  
Lane 2: Non-transfected lysate.

[Protocol Download](#)

### Western Blot (Recombinant protein)

[Protocol Download](#)

### Sandwich ELISA (Recombinant protein)



Detection limit for recombinant GST tagged VGLL1 is 0.1 ng/ml as a capture antibody.

[Protocol Download](#)

### ELISA

### Gene Information

Entrez GeneID: [51442](#)

GeneBank [NM\\_016267](#)

Accession#:

Protein [NP\\_057351.1](#)

Accession#:

Gene Name: VGLL1

Gene Alias: TDU,VGL1

Gene vestigial like 1 (Drosophila)

Description:

Omim ID: [300583](#)

Gene Ontology: [Hyperlink](#)

**Gene Summary:** The protein encoded by this gene binds proteins of the TEA domain family of transcription factors (TEFs) through the Vg (vestigial) homology region found in its N-terminus. It may thus function as a specific coactivator for the mammalian TEFs. [provided by RefSeq]

Other OTTHUMP00000024123,TONDU,WUGSC:H\_GS188P18.1b,vestigial like

