

PLA1A 293T Cell Transient Overexpression Lysate(Denatured)

Catalog # : H00051365-T01

規格 : [100 uL]

[List All](#)

Specification

Transfected Cell Line: 293T

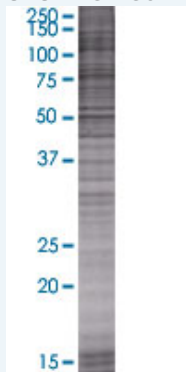
Plasmid: pCMV-PLA1A full-length

Host: Human

Theoretical MW (kDa): 50.27

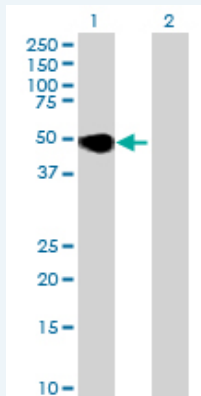
Quality Control Testing: Transient overexpression cell lysate was tested with Anti-PLA1A antibody ([H00051365-B01](#)) by Western Blots.

SDS-PAGE Gel



PLA1A transfected lysate.

Western Blot



Lane 1: PLA1A transfected lysate (50.27 KDa)

Lane 2: Non-transfected lysate.

Storage Buffer: 1X Sample Buffer (50 mM Tris-HCl, 2% SDS, 10% glycerol, 300 mM 2-mercaptoethanol, 0.01% Bromophenol blue)

Storage Instruction: Store at -80°C. Aliquot to avoid repeated freezing and thawing.

MSDS:  [Download](#)

Applications

Application Image

Western Blot

Western Blot

Gene Information

Entrez GeneID: [51365](#)

GeneBank Accession#: [NM_015900.1](#)

Protein Accession#: [NP_056984.1](#)

Gene Name: PLA1A

Gene Alias: PS-PLA1,PSPLA1

Gene Description: phospholipase A1 member A

Omim ID: [607460](#)

Gene Ontology: [Hyperlink](#)

Gene Summary: Phosphatidylserine-specific phospholipase A1-alpha (PLA1A) acts specifically on phosphatidylserine (PS) and 1-acyl-2-lysophosphatidylserine (lyso-PS) to hydrolyze fatty acids at the sn-1 position of these phospholipids.[supplied by OMIM]

Other Designations: phosphatidylserine-specific phospholipase A1alpha

Gene Pathway

[Tropane, piperidine and pyridine alkaloid biosynthesis](#)

Related Disease

[Cardiovascular Diseases](#) [Diabetes Mellitus, Type 2](#) [Edema](#)