

## TLR7 monoclonal antibody (M07), clone 4G6

Catalog # : H00051284-M07

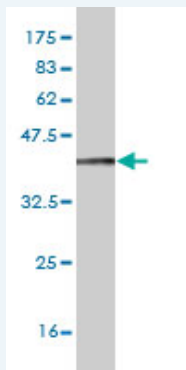
規格 : [ 100 ug ]

[List All](#)

### Specification

<b>Product Description:</b>	Mouse monoclonal antibody raised against a partial recombinant TLR7.
<b>Immunogen:</b>	TLR7 (NP_057646, 27 a.a. ~ 126 a.a) partial recombinant protein with GST tag. MW of the GST tag alone is 26 KDa.
<b>Sequence:</b>	ARWFPKTLPCDVTLDPKNIHVIVDCTDKHLTEIPGGIPTNTTTLTINHIP DISPASFHRLDHLVEIDFRNCNCVPIPLGSKNNMCIKRLQIKPRSFSGL
<b>Host:</b>	Mouse
<b>Reactivity:</b>	Human
<b>Isotype:</b>	IgG2a Kappa

**Quality Control Testing:** Antibody Reactive Against Recombinant Protein.



Western Blot detection against Immunogen (36.74 KDa) .

**Storage Buffer:** In 1x PBS, pH 7.4

**Storage Instruction:** Store at -20°C or lower. Aliquot to avoid repeated freezing and thawing.

**MSDS:** [Download](#)

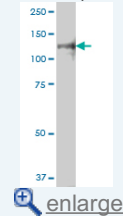
**Datasheet:** [Download](#)

### Applications

**Western Blot (Cell lysate)**

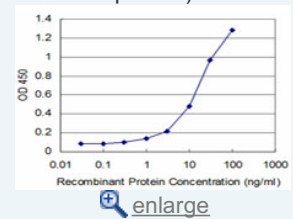
### Application Image

Western Blot (Cell lysate)

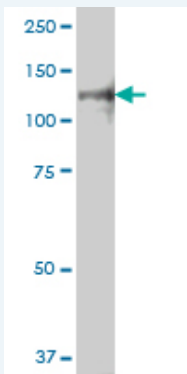


Western Blot (Recombinant protein)


Sandwich ELISA (Recombinant protein)



ELISA



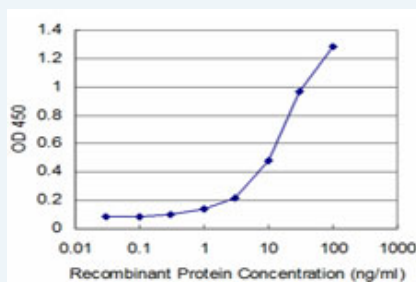
TLR7 monoclonal antibody (M07), clone 4G6. Western Blot analysis of TLR7 expression in Daoy.

 [Protocol Download](#)


#### Western Blot (Recombinant protein)

 [Protocol Download](#)

#### Sandwich ELISA (Recombinant protein)



Detection limit for recombinant GST tagged TLR7 is approximately 0.3ng/ml as a capture antibody.

 [Protocol Download](#)

#### ELISA

#### Gene Information

Entrez GeneID: [51284](#)

GeneBank [NM\\_016562](#)

Accession#:

Protein [NP\\_057646](#)

Accession#:

Gene Name: TLR7

Gene Alias: -

Gene toll-like receptor 7

Description:

Omim ID: [300365](#)

Gene Ontology: [Hyperlink](#)

**Gene Summary:** The protein encoded by this gene is a member of the Toll-like receptor (TLR) family which plays a fundamental role in pathogen recognition and activation of innate immunity. TLRs are highly conserved from *Drosophila* to humans and share structural and functional similarities. They recognize pathogen-associated molecular patterns (PAMPs) that are expressed on infectious agents, and mediate the production of cytokines necessary for the development of effective immunity. The various TLRs exhibit different patterns of expression. This gene is predominantly expressed in lung, placenta, and spleen, and lies in close

proximity to another family member, TLR8, on chromosome X. [provided by RefSeq]

**Other Designations:** OTTHUMP00000022919

#### Gene Pathway

[Toll-like receptor signaling pathway](#)

#### Related Disease

[Arthritis, Rheumatoid](#) [Asthma](#) [Asthma](#) [Atherosclerosis](#) [Bronchiolitis Obliterans](#) [Bronchiolitis, Viral](#) [Calcinosis](#) [Carcinoma, Basal Cell](#) [Carcinoma, Squamous Cell](#) [Cardiovascular Diseases](#) [Connective Tissue Diseases](#) [Coronary Artery Disease](#) [Diabetes Mellitus, Type 2](#) [Disease Progression](#) [Edema](#) [Fetal Diseases](#) [Genetic Diseases, X-Linked](#) [Genetic Predisposition to Disease](#) [Hepatitis C, Chronic](#)

[... see more](#)

[服務條款](#) | [隱私權政策](#) | [著作及商標](#) | [網站地圖](#)

©2016 亞諾法生技股份有限公司 Abnova Corporation. 版權所有.