

GOLM1 293T Cell Transient Overexpression Lysate(Denatured)

Catalog # : H00051280-T01

規格 : [100 uL]

List All

Specification

Transfected Cell Line: 293T

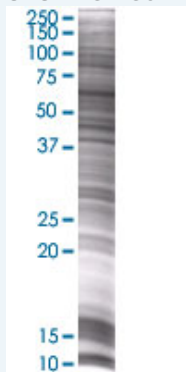
Plasmid: pCMV-GOLM1 full-length

Host: Human

Theoretical MW (kDa): 44.22

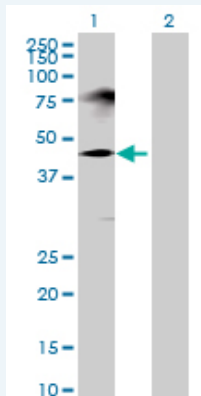
Quality Control Testing: Transient overexpression cell lysate was tested with Anti-GOLM1 antibody ([H00051280-B01](#)) by Western Blots.

SDS-PAGE Gel



GOLM1 transfected lysate.

Western Blot



Lane 1: GOLM1 transfected lysate (44.22 KDa)

Lane 2: Non-transfected lysate.

Storage Buffer: 1X Sample Buffer (50 mM Tris-HCl, 2% SDS, 10% glycerol, 300 mM 2-mercaptoethanol, 0.01% Bromophenol blue)

Storage Instruction: Store at -80°C. Aliquot to avoid repeated freezing and thawing.

MSDS:  [Download](#)

Applications

Application Image

Western Blot

Western Blot

Gene Information

Entrez GeneID: [51280](#)

GeneBank [NM_016548.2](#)
Accession#:

Protein [NP_057632.2](#)
Accession#:

Gene Name: GOLM1

Gene Alias: C9orf155,FLJ22634,FLJ23608,GOLPH2,GP73,PSEC0257,bA379P1.3

Gene Description: golgi membrane protein 1

Omim ID: [606804](#)

Gene Ontology: [Hyperlink](#)

Gene Summary: The Golgi complex plays a key role in the sorting and modification of proteins exported from the endoplasmic reticulum. The protein encoded by this gene is a type II Golgi transmembrane protein. It processes proteins synthesized in the rough endoplasmic reticulum and assists in the transport of protein cargo through the Golgi apparatus. The expression of this gene has been observed to be upregulated in response to viral infection. Alternatively spliced transcript variants encoding the same protein have been described for this gene. [provided by RefSeq]

Other Designations: OTTHUMP00000021587,golgi membrane protein GP73,golgi phosphoprotein 2,golgi protein, 73-kD

Related Disease

[Alzheimer Disease](#) [Alzheimer disease](#) [Cognition](#) [Genetic Predisposition to Disease](#)
[Tobacco Use Disorder](#)