

CPA4 monoclonal antibody (M07), clone 1F4

Catalog # : H00051200-M07

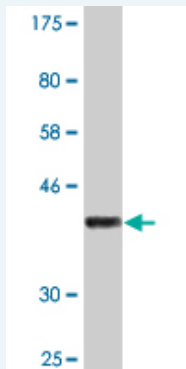
規格 : [100 ug]

[List All](#)

Specification

Product Description:	Mouse monoclonal antibody raised against a partial recombinant CPA4.
Immunogen:	CPA4 (NP_057436, 260 a.a. ~ 361 a.a) partial recombinant protein with GST tag. MW of the GST tag alone is 26 KDa.
Sequence:	NASFAGKGASDNPCSEVYHGPHANSEVEVKSWDFIQKHGKGFIDLHS YSQLLMYPYGYSVKKAPDAEELDKVARLAAKALASVSGTEYQVGPTCTT VYP
Host:	Mouse
Reactivity:	Human
Isotype:	IgG1 Kappa

Quality Control Testing: Antibody Reactive Against Recombinant Protein.



Western Blot detection against Immunogen (36.96 KDa) .

Storage Buffer: In 1x PBS, pH 7.4

Storage Instruction: Store at -20°C or lower. Aliquot to avoid repeated freezing and thawing.

MSDS: [Download](#)

Datasheet: [Download](#)

Applications

Western Blot (Recombinant protein)

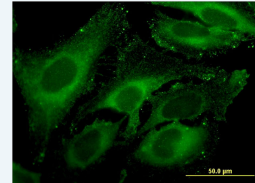
[Protocol Download](#)

Immunofluorescence

Application Image

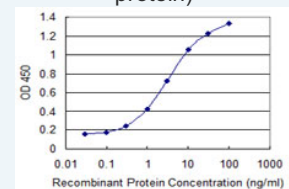
Western Blot (Recombinant protein)

Immunofluorescence



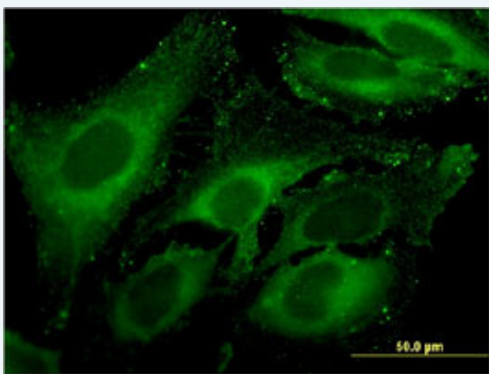
[enlarge](#)

Sandwich ELISA (Recombinant protein)



[enlarge](#)

ELISA

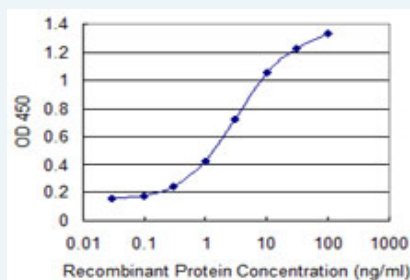


[enlarge this image](#)

Immunofluorescence of monoclonal antibody to CPA4 on HeLa cell . [antibody concentration 10 ug/ml]

[Protocol Download](#)

Sandwich ELISA (Recombinant protein)



Detection limit for recombinant GST tagged CPA4 is 0.1 ng/ml as a capture antibody.

[Protocol Download](#)

ELISA

Gene Information

Entrez GeneID: [51200](#)

GeneBank Accession#: [NM_016352](#)

Protein Accession#: [NP_057436](#)

Gene Name: CPA4

Gene Alias: CPA3

Gene Description: carboxypeptidase A4

Omim ID: [607635](#)

Gene Ontology: [Hyperlink](#)

Gene Summary: This gene is a member of the carboxypeptidase A/B subfamily, and it is located in a cluster with three other family members on chromosome 7. Carboxypeptidases are zinc-containing exopeptidases that catalyze the release of carboxy-terminal amino acids, and are synthesized as zymogens that are activated by proteolytic cleavage. This gene could be involved in the histone hyperacetylation pathway. It is imprinted and may be a strong candidate gene for prostate cancer aggressiveness. [provided by RefSeq]

Other Designations: carboxypeptidase A3

Related Disease

