

## CRBN purified MaxPab mouse polyclonal antibody (B01P) MaxPab®

Catalog # : H00051185-B01P

規格 : [ 50 ug ]

[List All](#)

### Specification

**Product Description:** Mouse polyclonal antibody raised against a full-length human CRBN protein.

**Immunogen:** CRBN (NP\_057386.2, 1 a.a. ~ 442 a.a) full-length human protein.

**Sequence:**  
 MAGEGDQQDAAHNMGNHLPLPAESEEEDEMEVEDQDSKEAKKPNIINF  
 DTSLPTSHTYL GADMEEFHGRTLHDDSDSCVIPVLPQVMMILIPGQTLPL  
 QLFHPQEVSMVRNLIQKDRTFVLAYSNVQEREAQFGTTAEIYAYREEQ  
 DFGIEIVKVKAIQRQRFKVLRLRTQSDGIQAKVQILPECVLPSTMSAVQL  
 ESLNKCQIFPSKPVSRDQCSYKWWQKYQKRKFHCANLTSWPRWLYSL  
 YDAETLMDRIKKQLREWENLKDDSLPSNPIDFSYRVAACLPIDDVLRQL  
 LKIGSAIQLRCELDIMNKCTSLCCKQCQETEITTKNEIFSLSLCGPMAAY  
 VNPFGYVHETLTVYKACNLNLIGRPSTEHSWFPGYAWTVAQCKICASHIG  
 WKFTATKDMSPQKFWGLTRSALLPTIPDTEDEISPDKVLCL

**Host:** Mouse

**Reactivity:** Human

**Quality Control Testing:** Antibody reactive against mammalian transfected lysate.

**Storage Buffer:** In 1x PBS, pH 7.4

**Storage Instruction:** Store at -20°C or lower. Aliquot to avoid repeated freezing and thawing.

**MSDS:**  [Download](#)

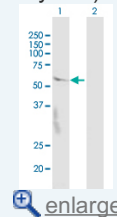
**Datasheet:**  [Download](#)


### Publication Reference

- [The Neuroprotective Effect of Thalidomide against Ischemia through the Cereblon-mediated Repression of AMPK Activity.](#)  
Sawamura N, Yamada M, Fujiwara M, Yamada H, Hayashi H, Takagi N, Asahi T. *Sci Rep*. 2018 Feb 6;8(1):2459.
- [CRL4A\(CRBN\) E3 ubiquitin ligase restricts BK channel activity and prevents epileptogenesis.](#)  
Liu J, Ye J, Zou X, Xu Z, Feng Y, Zou X, Chen Z, Li Y, Cang Y. *Nat Commun*. 2014 May 21;5:3924. doi: 10.1038/ncomms4924.
- [Deficient Import of Acetyl-CoA into the ER Lumen Causes Neurodegeneration and Propensity to Infections, Inflammation, and Cancer.](#)  
Peng Y, Li M, Clarkson BD, Pehar M, Lao PJ, Hillmer AT, Barnhart TE, Christian BT, Mitchell HA, Bendlin BB, Sandor M, Puglielli LJ. *Neurosci*. 2014 May 14;34(20):6772-89. doi: 10.1523/JNEUROSCI.0077-14.2014.
- [Identification of salt-inducible kinase 3 as a novel tumor antigen associated with tumorigenesis of ovarian cancer.](#)  
Charoenfuprasert S, Yang YY, Lee YC, Chao KC, Chu PY, Lai CR, Hsu KF, Chang KC, Chen YC, Chen LT, Chang JY, Leu SJ, Shih NY. *Oncogene*. 2011 Mar 14. [Epub ahead of print]

### Application Image

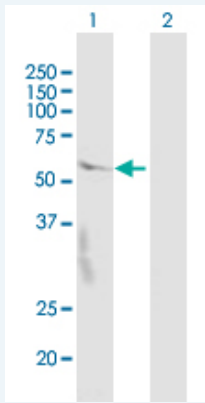
Western Blot (Transfected lysate)



 [enlarge](#)

## Applications

### Western Blot (Transfected lysate)



Western Blot analysis of CRBN expression in transfected 293T cell line ([H00051185-T01](#)) by CRBN MaxPab polyclonal antibody.

Lane 1: CRBN transfected lysate(48.62 KDa).

Lane 2: Non-transfected lysate.

 [Protocol Download](#)

### Gene Information

Entrez GeneID: [51185](#)

GeneBank [NM\\_016302.2](#)

Accession#:

Protein [NP\\_057386.2](#)

Accession#:

Gene Name: CRBN

Gene Alias: DKFZp781K0715,MGC27358,MRT2A

Gene cereblon

Description:

Omim ID: [607417](#), [609262](#)

Gene Ontology: [Hyperlink](#)

Other mental retardation, non-syndromic, autosomal recessive, 2A,protein x

Designations: 0001

[服務條款](#) | [隱私權政策](#) | [著作及商標](#) | [網站地圖](#)

©2019 亞諾法生技股份有限公司 Abnova Corporation. 版權所有.