

## LEF1 (Human) Recombinant Protein (Q01)

Catalog # : H00051176-Q01

規格 : [ 10 ug ] [ 25 ug ]

List All

### Specification

**Product Description:** Human LEF1 partial ORF ( NP\_057353, 14 a.a. - 123 a.a.) recombinant protein with GST-tag at N-terminal.

**Sequence:** DPELCATDEMIPFKDEGDPQKEKIFAEISHPEEEGDLADIKSSLVNESEIIPA  
SNGHEVARQAQTSQEPYHDKAREHPDDGKHPDGGLYNKGPSYSSYSG  
YIMMPNMNND

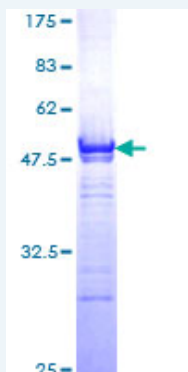
**Host:** Wheat Germ (in vitro)

**Theoretical MW (kDa):** 37.84

**Preparation Method:** *in vitro* wheat germ expression system

**Purification:** Glutathione Sepharose 4 Fast Flow

**Quality Control Testing:** 12.5% SDS-PAGE Stained with Coomassie Blue.



**Storage Buffer:** 50 mM Tris-HCl, 10 mM reduced Glutathione, pH=8.0 in the elution buffer.

**Storage Instruction:** Store at -80°C. Aliquot to avoid repeated freezing and thawing.

**Note:** Best use within three months from the date of receipt of this protein.

**MSDS:** [Download](#)

**Datasheet:** [Download](#)

### Applications

Enzyme-linked Immunoabsorbent Assay

Western Blot (Recombinant protein)

Antibody Production

### Application Image

Enzyme-linked  
Immunoabsorbent Assay

Western Blot (Recombinant  
protein)

Antibody Production

Protein Array

## Protein Array

### Gene Information

Entrez GeneID: [51176](#)

GeneBank Accession#: [NM\\_016269](#)

Protein Accession#: [NP\\_057353](#)

Gene Name: LEF1

Gene Alias: DKFZp586H0919,TCF1ALPHA

Gene Description: lymphoid enhancer-binding factor 1

Omim ID: [153245](#)

Gene Ontology: [Hyperlink](#)

**Gene Summary:** LEF1 is a nuclear protein that is expressed in pre-B and T cells. It binds to a functionally important site in the T-cell receptor-alpha (TCRA; MIM 186880) enhancer and confers maximal enhancer activity. LEF1 belongs to a family of regulatory proteins that share homology with high mobility group protein-1 (HMG1; MIM 163905) (Waterman et al., 1991 [PubMed 2010090]; van Genderen et al., 1994 [PubMed 7958926]). [supplied by OMIM]

Other Designations: lymphoid enhancer binding factor-1

### Gene Pathway

[Acute myeloid leukemia](#) [Adherens junction](#)  
[Arrhythmogenic right ventricular cardiomyopathy \(ARVC\)](#) [Basal cell carcinoma](#)  
[Colorectal cancer](#) [Endometrial cancer](#) [Melanogenesis](#) [Pathways in cancer](#) [Prostate cancer](#)  
[Thyroid cancer](#) [Wnt signaling pathway](#)

### Related Disease

[Alcoholism](#) [Cleft Lip](#) [Cleft Palate](#) [Craniofacial Abnormalities](#) [Depressive Disorder, Major](#)  
[Genetic Predisposition to Disease](#) [Heart Defects, Congenital](#) [Mouth Abnormalities](#)

[服務條款](#) | [隱私權政策](#) | [著作及商標](#) | [網站地圖](#)

©2016 亞諾法生技股份有限公司 Abnova Corporation. 版權所有.