

LEF1 monoclonal antibody (M08), clone 2E2

Catalog # : H00051176-M08

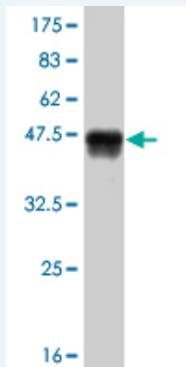
規格 : [100 ug]

[List All](#)

Specification

Product Description:	Mouse monoclonal antibody raised against a full length recombinant LEF1.
Immunogen:	LEF1 (NP_057353, 33 a.a. ~ 138 a.a) full-length recombinant protein with GST tag. MW of the GST tag alone is 26 KDa.
Sequence:	QKEKIFAEISHPEEEGLDLADIKSSLVNESEIIPASNGHEVARQAQT SQEPYHDKAREHPDDGKHPDGGLYKGPSYSSYSYGYIMMPNMNNDPYMSNGSLS PPIPRT
Host:	Mouse
Reactivity:	Human
Isotype:	IgG2b Kappa

Quality Control Testing: Antibody Reactive Against Recombinant Protein.



Western Blot detection against Immunogen (37.29 KDa) .

Storage Buffer: In 1x PBS, pH 7.4

Storage Instruction: Store at -20°C or lower. Aliquot to avoid repeated freezing and thawing.

MSDS: [Download](#)

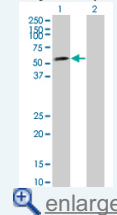
Datasheet: [Download](#)

Applications

Western Blot (Transfected lysate)

Application Image

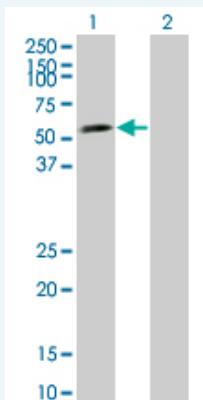
Western Blot (Transfected lysate)



[enlarge](#)


Western Blot (Recombinant protein)

ELISA



Western Blot analysis of LEF1 expression in transfected 293T cell line by LEF1 monoclonal antibody (M08), clone 2E2.

Lane 1: LEF1 transfected lysate(44.2 KDa).
Lane 2: Non-transfected lysate.

 [Protocol Download](#)

Western Blot (Recombinant protein)

 [Protocol Download](#)

ELISA

Gene Information

Entrez GeneID: [51176](#)

GeneBank Accession#: [NM_016269](#)

Protein Accession#: [NP_057353](#)

Gene Name: LEF1

Gene Alias: DKFZp586H0919,TCF1ALPHA

Gene Description: lymphoid enhancer-binding factor 1

Omim ID: [153245](#)

Gene Ontology: [Hyperlink](#)

Gene Summary: LEF1 is a nuclear protein that is expressed in pre-B and T cells. It binds to a functionally important site in the T-cell receptor-alpha (TCRA; MIM 186880) enhancer and confers maximal enhancer activity. LEF1 belongs to a family of regulatory proteins that share homology with high mobility group protein-1 (HMG1; MIM 163905) (Waterman et al., 1991 [PubMed 2010090]; van Genderen et al., 1994 [PubMed 7958926]). [supplied by OMIM]

Other Designations: lymphoid enhancer binding factor-1

Gene Pathway

[Acute myeloid leukemia](#) [Adherens junction](#)
[Arrhythmogenic right ventricular cardiomyopathy \(ARVC\)](#) [Basal cell carcinoma](#)
[Colorectal cancer](#) [Endometrial cancer](#) [Melanogenesis](#) [Pathways in cancer](#) [Prostate cancer](#)
[Thyroid cancer](#) [Wnt signaling pathway](#)

Related Disease

