

LEF1 monoclonal antibody (M03), clone 5A3

Catalog # : H00051176-M03

規格 : [100 ug]

[List All](#)

Specification

Product Description: Mouse monoclonal antibody raised against a partial recombinant LEF1.

Immunogen: LEF1 (NP_057353, 14 a.a. ~ 123 a.a) partial recombinant protein with GST tag. MW of the GST tag alone is 26 KDa.

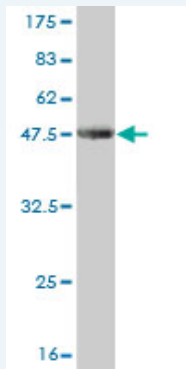
Sequence: DPELCATDEMIPFKDEGDPQKEKIFAEISHPEEEGLADIKSSLVNESEIIPA
SNGHEVARQAQTSQEPYHDKAREHPDDGKHPDGGLYNKGPSYSSYSYG
YIMMPNMNND

Host: Mouse

Reactivity: Human

Isotype: IgG1 Kappa

Quality Control Testing: Antibody Reactive Against Recombinant Protein.



Western Blot detection against Immunogen (37.84 KDa) .

Storage Buffer: In 1x PBS, pH 7.4

Storage Instruction: Store at -20°C or lower. Aliquot to avoid repeated freezing and thawing.

MSDS: [Download](#)

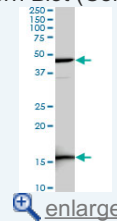
Datasheet: [Download](#)

Applications

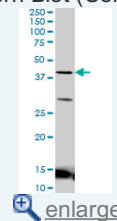
Western Blot (Cell lysate)

Application Image

Western Blot (Cell lysate)

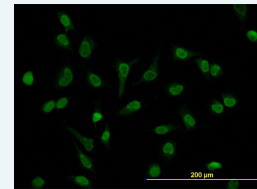


Western Blot (Cell lysate)

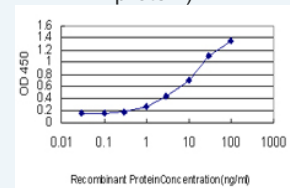


Western Blot (Recombinant protein)

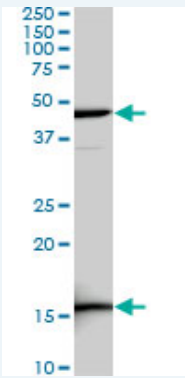
Immunofluorescence



Sandwich ELISA (Recombinant protein)



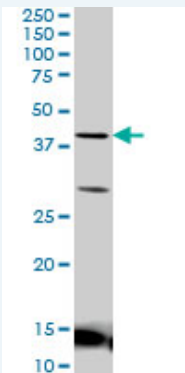
ELISA



LEF1 monoclonal antibody (M03), clone 5A3. Western Blot analysis of LEF1 expression in HepG2 (Cat # L019V1).

[Protocol Download](#)

Western Blot (Cell lysate)



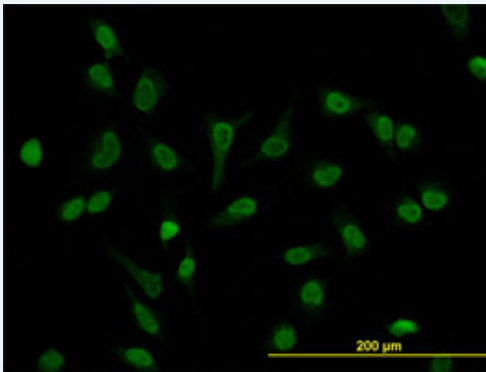
LEF1 monoclonal antibody (M03), clone 5A3 Western Blot analysis of LEF1 expression in Jurkat (Cat # L017V1).

[Protocol Download](#)

Western Blot (Recombinant protein)

[Protocol Download](#)

Immunofluorescence

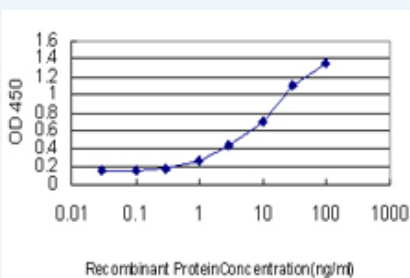


[enlarge this image](#)

Immunofluorescence of monoclonal antibody to LEF1 on HeLa cell. [antibody concentration 10 ug/ml]

[Protocol Download](#)

Sandwich ELISA (Recombinant protein)



Detection limit for recombinant GST tagged LEF1 is approximately 0.3ng/ml as a capture antibody.

ELISA

Gene Information

Entrez GeneID: [51176](#)**GeneBank
Accession#:** [NM_016269](#)**Protein
Accession#:** [NP_057353](#)**Gene Name:** LEF1**Gene Alias:** DKFZp586H0919,TCF1ALPHA**Gene
Description:** lymphoid enhancer-binding factor 1**Omim ID:** [153245](#)**Gene Ontology:** [Hyperlink](#)**Gene Summary:** LEF1 is a nuclear protein that is expressed in pre-B and T cells. It binds to a functionally important site in the T-cell receptor-alpha (TCRA; MIM 186880) enhancer and confers maximal enhancer activity. LEF1 belongs to a family of regulatory proteins that share homology with high mobility group protein-1 (HMG1; MIM 163905) (Waterman et al., 1991 [PubMed 2010090]; van Genderen et al., 1994 [PubMed 7958926]). [supplied by OMIM]**Other
Designations:** lymphoid enhancer binding factor-1**Gene Pathway**

[Acute myeloid leukemia](#) [Adherens junction](#)
[Arrhythmogenic right ventricular cardiomyopathy \(ARVC\)](#) [Basal cell carcinoma](#)
[Colorectal cancer](#) [Endometrial cancer](#) [Melanogenesis](#) [Pathways in cancer](#) [Prostate cancer](#)
[Thyroid cancer](#) [Wnt signaling pathway](#)

Related Disease

[Alcoholism](#) [Cleft Lip](#) [Cleft Palate](#) [Craniofacial Abnormalities](#) [Depressive Disorder, Major](#)
[Genetic Predisposition to Disease](#) [Heart Defects, Congenital](#) [Mouth Abnormalities](#)