

SLC45A2 purified MaxPab rabbit polyclonal antibody (D01P) MaxPab®

Catalog # : H00051151-D01P

規格 : [100 ug]

[List All](#)

Specification

Product Description: Rabbit polyclonal antibody raised against a full-length human SLC45A2 protein.

Immunogen: SLC45A2 (NP_001012527.1, 1 a.a. ~ 460 a.a) full-length human protein.

Sequence: MGSNSGQAGRHIYKSLADDGPFDSVEPPKRPTSR LIMHSMAMFGREFC
 YAVEAAYVTPVLLSVGLPSSLYSIWWFLSPILGFLLPVVGVSASDHCRSR
 WGRRRPYILTLGVMMLVGMALYLNATVVAALIANPRRKLVAISVTMIG
 VVLFDAADFIDGPIKAYLFDVCSHQDKEKGLHYHALFTGFGGALGYLLG
 AIDWAHLELGRLLGTEFQVMFFSALVLTLCFTVHLCSISEAPL TEVAKGI
 PPQQTPQDPPLSSDGMYEYGSIEKVKNGYVNP ELAMQGAKNKNHAEQT
 RRAMTLKSLLRALVNMPPHYRYLCISHLIGWTAFLSNMLFF TDFMGQIVY
 RGDYPYSAHNSTEF LIYERGVVEVCWGF CINSVFSSLYSYFQKVLVSYIGL
 KGLYFTGYLLFGLGTGFIFLFPNMYSTLVLC SLFGVMSSTLYTVPFNLITE
 YHREEEKEVCCH

Host: Rabbit

Reactivity: Human

Quality Control Testing: Antibody reactive against mammalian transfected lysate.

Storage Buffer: In 1x PBS, pH 7.4

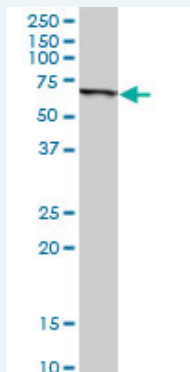
Storage Instruction: Store at -20°C or lower. Aliquot to avoid repeated freezing and thawing.

MSDS:  [Download](#)


Datasheet:  [Download](#)

Applications

Western Blot (Cell lysate)

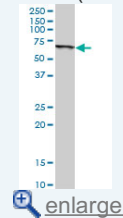


SLC45A2 MaxPab rabbit polyclonal antibody. Western Blot analysis of SLC45A2 expression in HeLa.

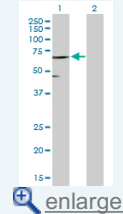
 [Protocol Download](#)

Application Image

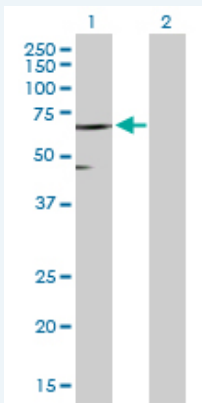
Western Blot (Cell lysate)



Western Blot (Transfected lysate)



Western Blot (Transfected lysate)



Western Blot analysis of SLC45A2 expression in transfected 293T cell line ([H00051151-T01](#)) by SLC45A2 MaxPab polyclonal antibody.

Lane 1: SLC45A2 transfected lysate(51.20 KDa).
Lane 2: Non-transfected lysate.

 [Protocol Download](#)

Gene Information

Entrez GeneID: [51151](#)

GeneBank [NM_001012509.1](#)
Accession#:

Protein [NP_001012527.1](#)
Accession#:

Gene Name: SLC45A2

Gene Alias: 1A1,AIM1,MATP,SHEP5

Gene Description: solute carrier family 45, member 2

Omim ID: [606202](#), [606574](#)

Gene Ontology: [Hyperlink](#)

Gene Summary: This gene encodes a transporter protein that mediates melanin synthesis. The protein is expressed in a high percentage of melanoma cell lines. Mutations in this gene are a cause of oculocutaneous albinism type 4, and polymorphisms in this gene are associated with variations in skin and hair color. Multiple transcript variants encoding different isoforms have been found for this gene. [provided by RefSeq]

Other Designations: melanoma antigen AIM1,membrane associated transporter,membrane-associated transporter protein,underwhite

Related Disease

[Albinism](#), [Oculocutaneous Carcinoma](#), [Basal Cell Carcinoma](#), [Squamous Cell Cardiovascular Diseases](#) [Diabetes Mellitus](#), [Type 2 Edema](#)
[Genetic Predisposition to Disease](#) [Hermanski-Pudlak Syndrome](#) [Malignant melanoma](#)
[Melanoma](#) [Skin Neoplasms](#)