

## PHF20L1 (Human) Recombinant Protein (P01)

Catalog # : H00051105-P01

規格 : [ 10 ug ] [ 25 ug ]

[List All](#)

### Specification

**Product Description:** Human PHF20L1 full-length ORF ( NP\_940915.1, 1 a.a. - 285 a.a.) recombinant protein with GST-tag at N-terminal.

**Sequence:** MSKKPPNRPGITFEIGARLEALDYLQKWYPSRIEKIDYEEGKMLVHFERW  
SHRYDEWIYWDSNRLRPLERPALRKEGLKDEEDFFDFKAGEEVLARWT  
DCRYYPAKIEAINKEGTFVQFYDGVIRCLKRMHIKAMPEDAKGQDWIALV  
KAAAAAAKNKTGSKPRTSANSNKDKDKDERKWFVPSKKEETSTCIAT  
PDVEKKEDLPTSSETFGLHVENVPKMMFPQPESTLSNKRKNNQGNFSQA  
KRARLNKITGLLASKAVGVDGAEEKEDYNETAPMLEQV

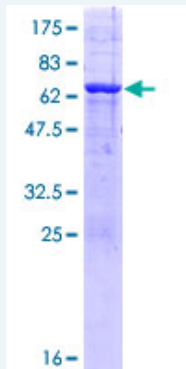
**Host:** Wheat Germ (in vitro)

**Theoretical MW (kDa):** 59.2

**Preparation Method:** *in vitro* wheat germ expression system

**Purification:** Glutathione Sepharose 4 Fast Flow

**Quality Control Testing:** 12.5% SDS-PAGE Stained with Coomassie Blue.



**Storage Buffer:** 50 mM Tris-HCl, 10 mM reduced Glutathione, pH=8.0 in the elution buffer.

**Storage Instruction:** Store at -80°C. Aliquot to avoid repeated freezing and thawing.

**Note:** Best use within three months from the date of receipt of this protein.

**MSDS:** [Download](#)

**Datasheet:** [Download](#)

### Applications

Enzyme-linked Immunoabsorbent Assay

Western Blot (Recombinant protein)

### Application Image

Enzyme-linked Immunoabsorbent Assay

Western Blot (Recombinant protein)

Antibody Production

Protein Array

## Antibody Production

### Protein Array

### Gene Information

Entrez GeneID: [51105](#)

GeneBank Accession#: [NM\\_198513.1](#)

Protein Accession#: [NP\\_940915.1](#)

Gene Name: PHF20L1

Gene Alias: CGI-72,MGC64923

Gene Description: PHD finger protein 20-like 1

Gene Ontology: [Hyperlink](#)

Other Designations: OTTHUMP00000192871

[服務條款](#) | [隱私權政策](#) | [著作及商標](#) | [網站地圖](#)

©2016 亞諾法生技股份有限公司 Abnova Corporation. 版權所有.