

## MLXIPL (Human) Recombinant Protein (Q01)

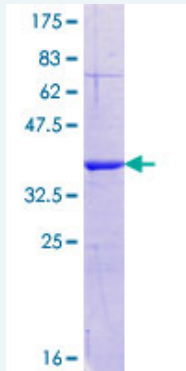
Catalog # : H00051085-Q01

規格 : [ 10 ug ] [ 25 ug ]

[List All](#)

### Specification

<b>Product Description:</b>	Human MLXIPL partial ORF ( NP_116569.1, 603 a.a. - 700 a.a.) recombinant protein with GST-tag at N-terminal.
<b>Sequence:</b>	PPAPSGSERRLSGDLSSMPGPGTLSVRVSPQPILSRGRPDSENKTENR RITHISAEQKRRFNILGFDLHGLVSTLSAQPSLKVSKATTLQKTAEYI
<b>Host:</b>	Wheat Germ (in vitro)
<b>Theoretical MW (kDa):</b>	36.52
<b>Preparation Method:</b>	<i>in vitro</i> wheat germ expression system
<b>Purification:</b>	Glutathione Sepharose 4 Fast Flow
<b>Quality Control Testing:</b>	12.5% SDS-PAGE Stained with Coomassie Blue.



**Storage Buffer:** 50 mM Tris-HCl, 10 mM reduced Glutathione, pH=8.0 in the elution buffer.

**Storage Instruction:** Store at -80°C. Aliquot to avoid repeated freezing and thawing.

**Note:** Best use within three months from the date of receipt of this protein.

**MSDS:** [Download](#)

**Datasheet:** [Download](#)

### Applications

Enzyme-linked Immunoabsorbent Assay

Western Blot (Recombinant protein)

Antibody Production

Protein Array

### Application Image

Enzyme-linked Immunoabsorbent Assay

Western Blot (Recombinant protein)

Antibody Production

Protein Array

## Gene Information

Entrez GeneID: [51085](#)

GeneBank Accession#: [NM\\_032951](#)

Protein Accession#: [NP\\_116569.1](#)

Gene Name: MLXIPL

Gene Alias: CHREBP, MIO, MONDOB, WBSR14, WS-bHLH, bHLHd14

Gene Description: MLX interacting protein-like

Omim ID: [605678](#)

Gene Ontology: [Hyperlink](#)

**Gene Summary:** This gene encodes a basic helix-loop-helix leucine zipper transcription factor of the Myc/Max/Mad superfamily. This protein forms a heterodimeric complex and binds and activates, in a glucose-dependent manner, carbohydrate response element (ChoRE) motifs in the promoters of triglyceride synthesis genes. The gene is deleted in Williams-Beuren syndrome, a multisystem developmental disorder caused by the deletion of contiguous genes at chromosome 7q11.23. [provided by RefSeq]

**Other Designations:** Mlx interactor, OTTHUMP00000160457, OTTHUMP00000160458, WS basic-helix-loop-helix leucine zipper protein, Williams Beuren syndrome chromosome region 14, carbohydrate response element binding protein, carbohydrate-responsive element-binding protein

## Related Disease

[Alzheimer Disease](#) [Alzheimer disease](#) [Brain Ischemia](#) [Breast cancer](#) [Breast Neoplasms](#) [Cardiovascular Diseases](#) [Coronary Artery Disease](#) [Dementia](#) [Diabetes Complications](#) [Diabetes Mellitus, Type 2](#) [Genetic Predisposition to Disease](#) [Hypertriglyceridemia](#) [Insulin Resistance](#) [Lipid Metabolism Disorders](#) [Metabolic Syndrome X](#) [Neoplasms](#) [Obesity](#) [Obesity](#) [Osteoporosis](#)

... see more

[服務條款](#) | [隱私權政策](#) | [著作及商標](#) | [網站地圖](#)

©2016 亞諾法生技股份有限公司 Abnova Corporation. 版權所有.