

LAP3 monoclonal antibody (M02), clone 4G10

Catalog # : H00051056-M02

規格 : [100 ug]

[List All](#)

Specification

Product Description: Mouse monoclonal antibody raised against a partial recombinant LAP3.

Immunogen: LAP3 (NP_056991, 420 a.a. ~ 519 a.a) partial recombinant protein with GST tag. MW of the GST tag alone is 26 KDa.

Sequence: EASIETGDRVWRMPLFEHYTRQVWDCQLADVNNIGKYRSAGACTAAAFLLKEFVTHPKWAHLDIAGVMTNKDEVPLYLRKGMTGRPTRTLIEFLLRFSQDNA

Host: Mouse

Reactivity: Human

Isotype: IgG2a Kappa

Quality Control Testing: Antibody Reactive Against Recombinant Protein.

Storage Buffer: In 1x PBS, pH 7.4

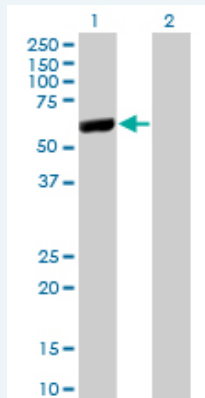
Storage Instruction: Store at -20°C or lower. Aliquot to avoid repeated freezing and thawing.

MSDS: [Download](#)

Datasheet: [Download](#)

Applications

Western Blot (Transfected lysate)



Western Blot analysis of LAP3 expression in transfected 293T cell line by LAP3 monoclonal antibody (M02), clone 4G10.

Lane 1: LAP3 transfected lysate(56.2 KDa).

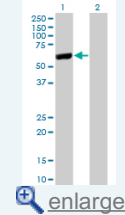
Lane 2: Non-transfected lysate.

[Protocol Download](#)

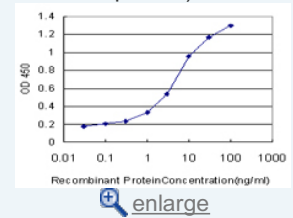
Sandwich ELISA (Recombinant protein)

Application Image

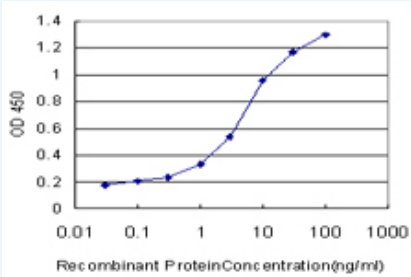
Western Blot (Transfected lysate)



Sandwich ELISA (Recombinant protein)



ELISA



Detection limit for recombinant GST tagged LAP3 is approximately 0.03ng/ml as a capture antibody.

 [Protocol Download](#)

ELISA

Gene Information

Entrez GeneID: [51056](#)

GeneBank [NM_015907](#)

Accession#:

Protein [NP_056991](#)

Accession#:

Gene Name: LAP3

Gene Alias: LAP, LAPEP, PEPS

Gene Description: leucine aminopeptidase 3

Omim ID: [170250](#)

Gene Ontology: [Hyperlink](#)

Other Designations: peptidase S

Gene Pathway

[Arginine and proline metabolism](#) [Glutathione metabolism](#) [Metabolic pathways](#)

Related Disease

[Tobacco Use Disorder](#)