

FIS1 monoclonal antibody (M01), clone 1G9

Catalog # : H00051024-M01

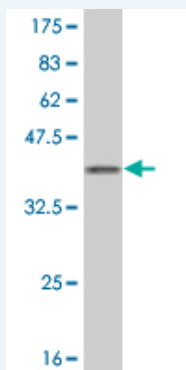
規格 : [50 ug]

[List All](#)

Specification

Product Description:	Mouse monoclonal antibody raised against a full length recombinant FIS1.
Immunogen:	FIS1 (AAH03540.1, 1 a.a. ~ 152 a.a) full-length recombinant protein with GST tag. MW of the GST tag alone is 26 KDa.
Sequence:	MEAVLNELVSVEDLLKFEKKFQSEKAAGSVSKSTQFEYAWCLVRSKYND DIRKGMVLEELLPKGSKEEQRDYVFLAVGNRYRLKEYEKALKYVRGLLQ TEPQNNQAKELERLIDKAMKKGDLVGMMAVGGMALGVAGLAGLIGLAVSK SKS
Host:	Mouse
Reactivity:	Human
Isotype:	IgG2b Kappa

Quality Control Testing: Antibody Reactive Against Recombinant Protein.



Western Blot detection against Immunogen (42.46 KDa) .

Storage Buffer: In 1x PBS, pH 7.4

Storage Instruction: Store at -20°C or lower. Aliquot to avoid repeated freezing and thawing.

MSDS: [Download](#)

Interspecies Antigen Sequence: Mouse (96); Rat (97)

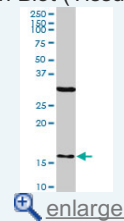
Datasheet: [Download](#)

Applications

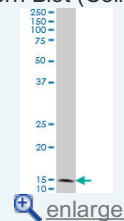
Western Blot (Tissue lysate)

Application Image

Western Blot (Tissue lysate)

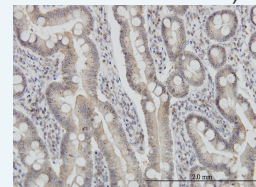


Western Blot (Cell lysate)

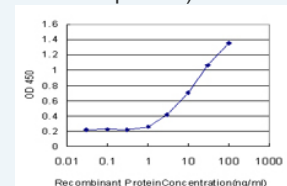


Western Blot (Recombinant protein)

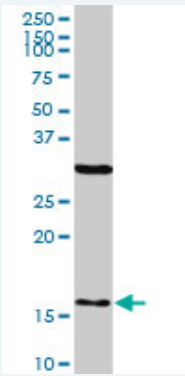
Immunohistochemistry (Formalin/PFA-fixed paraffin-embedded sections)



Sandwich ELISA (Recombinant protein)



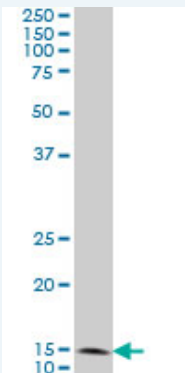
ELISA



FIS1 monoclonal antibody (M01), clone 1G9. Western Blot analysis of FIS1 expression in human liver.

[Protocol Download](#)

Western Blot (Cell lysate)



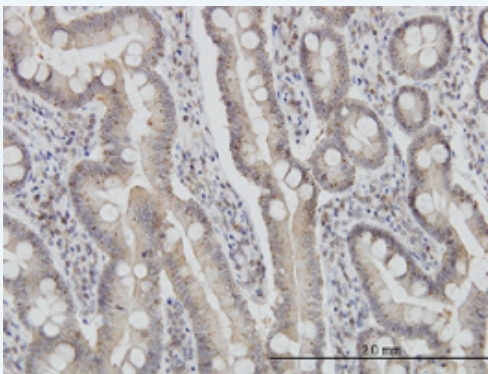
FIS1 monoclonal antibody (M01), clone 1G9 Western Blot analysis of FIS1 expression in A-431 (Cat # L015V1).

[Protocol Download](#)

Western Blot (Recombinant protein)

[Protocol Download](#)

Immunohistochemistry (Formalin/PFA-fixed paraffin-embedded sections)

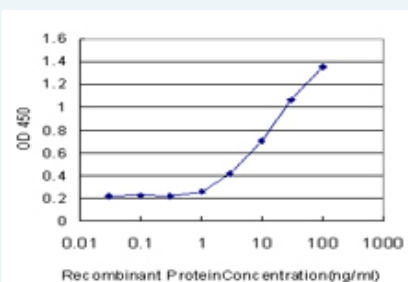


[enlarge this image](#)

Immunoperoxidase of monoclonal antibody to FIS1 on formalin-fixed paraffin-embedded human small Intestine. [antibody concentration 3 ug/ml]

[Protocol Download](#)

Sandwich ELISA (Recombinant protein)



Detection limit for recombinant GST tagged FIS1 is approximately 1ng/ml as a capture antibody.

ELISA

Gene Information

Entrez GeneID: [51024](#)

GeneBank [BC003540](#)
Accession#:

Protein [AAH03540.1](#)
Accession#:

Gene Name: FIS1

Gene Alias: CGI-135,TTC11

Gene Description: fission 1 (mitochondrial outer membrane) homolog (S. cerevisiae)

Omim ID: [609003](#)

Gene Ontology: [Hyperlink](#)

Gene Summary: The balance between fission and fusion regulates the morphology of mitochondria. TTC11 is a component of a mitochondrial complex that promotes mitochondrial fission (James et al., 2003 [PubMed 12783892]).[supplied by OMIM]

Other Designations: H_NH0132A01.6,tetratricopeptide repeat domain 11