

IMPG2 (Human) Recombinant Protein (Q01)

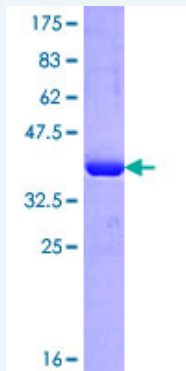
Catalog # : H00050939-Q01

規格 : [10 ug] [25 ug]

List All

Specification

Product Description:	Human IMPG2 partial ORF (NP_057331.2, 572 a.a. - 678 a.a.) recombinant protein with GST-tag at N-terminal.
Sequence:	LTSKVKDQLKVPFLPDASMEKELIFDGGLGSGSGQKVDLITWPWSETS SEKSAEPLSKPWLEDDDLLPAEIEDKKLVLDKMDSTDQISKHSKYEHD DRSTHFPE
Host:	Wheat Germ (in vitro)
Theoretical MW (kDa):	37.51
Preparation Method:	<i>in vitro</i> wheat germ expression system
Purification:	Glutathione Sepharose 4 Fast Flow
Quality Control Testing:	12.5% SDS-PAGE Stained with Coomassie Blue.



Storage Buffer: 50 mM Tris-HCl, 10 mM reduced Glutathione, pH=8.0 in the elution buffer.

Storage Instruction: Store at -80°C. Aliquot to avoid repeated freezing and thawing.

Note: Best use within three months from the date of receipt of this protein.

MSDS: [Download](#)

Datasheet: [Download](#)

Applications

Enzyme-linked Immunoabsorbent Assay

Western Blot (Recombinant protein)

Antibody Production

Application Image

Enzyme-linked Immunoabsorbent Assay

Western Blot (Recombinant protein)

Antibody Production

Protein Array

Protein Array

Gene Information

Entrez GeneID: [50939](#)

**GeneBank
Accession#:** [NM_016247](#)

**Protein
Accession#:** [NP_057331.2](#)

Gene Name: IMPG2

Gene Alias: IPM200,SPACRCAN

**Gene
Description:** interphotoreceptor matrix proteoglycan 2

Omim ID: [607056](#)

Gene Ontology: [Hyperlink](#)

Gene Summary: Interphotoreceptor matrix proteoglycan-2 is part of an extracellular complex occupying the interface between photoreceptors and the retinal pigment epithelium in the fundus of the eye.[supplied by OMIM]

**Other
Designations:** interphotoreceptor matrix proteoglycan 200

[服務條款](#) | [隱私權政策](#) | [著作及商標](#) | [網站地圖](#)

©2016 亞諾法生技股份有限公司 Abnova Corporation. 版權所有.