

C6orf48 (Human) Recombinant Protein (P01)

Catalog # : H00050854-P01

規格 : [10 ug] [25 ug]

[List All](#)

Specification

Product Description: Human C6orf48 full-length ORF (AAH00706, 1 a.a. - 37 a.a.) recombinant protein with GST-tag at N-terminal.

Sequence: MRVVMARLLSEGEQGIPTACAAFAQQPAGGHVAAWLG

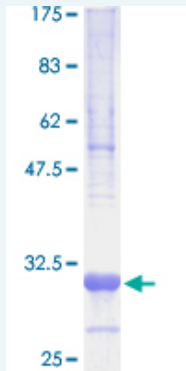
Host: Wheat Germ (in vitro)

Theoretical MW (kDa): 29.7

Preparation Method: *in vitro* wheat germ expression system

Purification: Glutathione Sepharose 4 Fast Flow

Quality Control Testing: 12.5% SDS-PAGE Stained with Coomassie Blue.



Storage Buffer: 50 mM Tris-HCl, 10 mM reduced Glutathione, pH=8.0 in the elution buffer.

Storage Instruction: Store at -80°C. Aliquot to avoid repeated freezing and thawing.

Note: Best use within three months from the date of receipt of this protein.

MSDS: [Download](#)

Datasheet: [Download](#)

Applications

Enzyme-linked Immunoabsorbent Assay

Western Blot (Recombinant protein)

Antibody Production

Protein Array

Application Image

Enzyme-linked Immunoabsorbent Assay

Western Blot (Recombinant protein)

Antibody Production

Protein Array

Gene Information

Entrez GeneID: [50854](#)

**GeneBank
Accession#:** [BC000706.1](#)

**Protein
Accession#:** [AAH00706](#)

Gene Name: C6orf48

Gene Alias: D6S57,G8

**Gene
Description:** chromosome 6 open reading frame 48

Omim ID: [605447](#)

Gene Ontology: [Hyperlink](#)

**Other
Designations:** G8
protein,OTTHUMP00000029250,OTTHUMP00000029251,OTTHUMP00000029253,OTTHUMP00000029254,OTTHUMP00000029256,OTTHUMP000000174626,OTTHUMP000000174627

Related Disease

[Cardiovascular Diseases](#) [Diabetes Mellitus, Type 2](#) [Edema](#)
[Genetic Predisposition to Disease](#) [Lupus Erythematosus, Systemic](#)

[服務條款](#) | [隱私權政策](#) | [著作及商標](#) | [網站地圖](#)

©2016 亞諾法生技股份有限公司 Abnova Corporation. 版權所有.