

TAS2R7 (Human) Recombinant Protein (P01)

Catalog # : H00050837-P01

規格 : [2 ug]

[List All](#)

Specification

Product Description: Human TAS2R7 full-length ORF (NP_076408.1, 1 a.a. - 318 a.a.) recombinant protein with GST-tag at N-terminal.

Sequence: MADKVQTTLLFLAVGEFSVGLGNAFIGLVN CMDWVKRKRKIASIDLILTSLA
ISRICLLCVILLDCFILVLYPDVYATGKEMRIIDFFWTLTNHLSIWFATCLSIY
YFFKIGNFFHPLFLWMKWRIDRVISWILLGCVLSVFI SLPATENLNADFR
FCVKAKRKTNL TWSCRVNKTQHASTKLFNLATLLPFCVCLMSFFLLILS
LRRHIRRMQLSATGCRDPSTEAHVRALKAVISFLLLFIAYYLSFLIATSSYF
MPETELAVIFGESIALIYPSSHSFILILGNNKLRHASLKVWVKVMSILKGRKF
QQHKQI

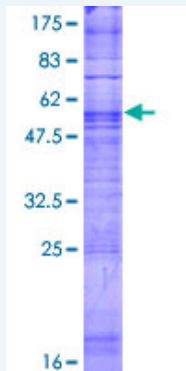
Host: Wheat Germ (in vitro)

Theoretical MW (kDa): 62.9

Preparation Method: *in vitro* wheat germ expression system

Purification: Glutathione Sepharose 4 Fast Flow

Quality Control Testing: 12.5% SDS-PAGE Stained with Coomassie Blue.



Storage Buffer: 50 mM Tris-HCl, 10 mM reduced Glutathione, pH=8.0 in the elution buffer.

Storage Instruction: Store at -80°C. Aliquot to avoid repeated freezing and thawing.

Note: Best use within three months from the date of receipt of this protein.

MSDS: [Download](#)

Datasheet: [Download](#)

Application Image

Enzyme-linked Immunoabsorbent Assay

Western Blot (Recombinant protein)

Antibody Production

Protein Array

Applications

Enzyme-linked Immunoabsorbent Assay

Western Blot (Recombinant protein)

Antibody Production

Protein Array

Gene Information

Entrez GeneID: [50837](#)

GeneBank Accession#: [NM_023919.2](#)

Protein Accession#: [NP_076408.1](#)

Gene Name: TAS2R7

Gene Alias: MGC142121,T2R7,TRB4

Gene Description: taste receptor, type 2, member 7

Omim ID: [604793](#)

Gene Ontology: [Hyperlink](#)

Gene Summary: This gene product belongs to the family of candidate taste receptors that are members of the G-protein-coupled receptor superfamily. These proteins are specifically expressed in the taste receptor cells of the tongue and palate epithelia. They are organized in the genome in clusters and are genetically linked to loci that influence bitter perception in mice and humans. In functional expression studies, they respond to bitter tastants. This gene maps to the taste receptor gene cluster on chromosome 12p13. [provided by RefSeq]

Other Designations: taste receptor, family B, member 4

Gene Pathway

[Taste transduction](#)
