

NEUROG3 monoclonal antibody (M01), clone 4B7

Catalog # : H00050674-M01

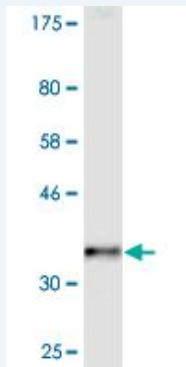
規格 : [100 ug]

[List All](#)

Specification

Product Description:	Mouse monoclonal antibody raised against a partial recombinant NEUROG3.
Immunogen:	NEUROG3 (NP_066279, 1 a.a. ~ 101 a.a) partial recombinant protein with GST tag. MW of the GST tag alone is 26 KDa.
Sequence:	MTPQPSGAPTVQVTRETERSFPRASEDEVTCPTSAPPSPTRTRGNCAE AEEGGCRGAPRKLRRRGGRSRPKSELALSKQRRSRKKANDRERNR MHNLN*
Host:	Mouse
Reactivity:	Human
Isotype:	IgG2a Kappa

Quality Control Testing: Antibody Reactive Against Recombinant Protein.



Western Blot detection against Immunogen (37.11 KDa) .

Storage Buffer: In 1x PBS, pH 7.4

Storage Instruction: Store at -20°C or lower. Aliquot to avoid repeated freezing and thawing.

MSDS: [Download](#)

Datasheet: [Download](#)

Applications

Western Blot (Recombinant protein)

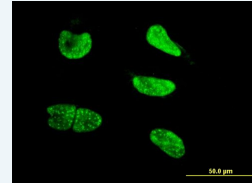
[Protocol Download](#)

Immunofluorescence

Application Image

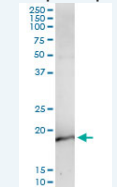
Western Blot (Recombinant protein)

Immunofluorescence



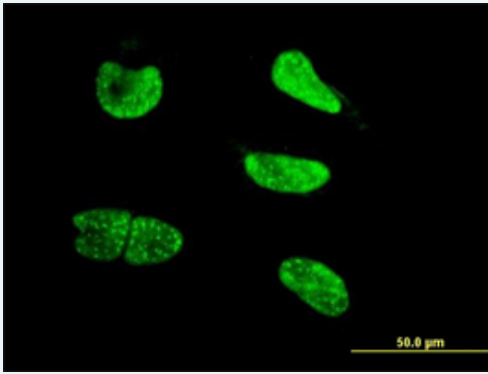
[enlarge](#)

Immunoprecipitation



[enlarge](#)

ELISA

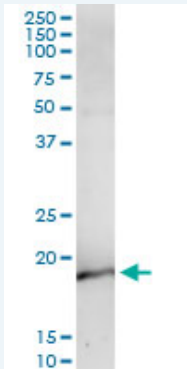


[enlarge this image](#)

Immunofluorescence of monoclonal antibody to NEUROG3 on HeLa cell . [antibody concentration 10 ug/ml]

[Protocol Download](#)

Immunoprecipitation



Immunoprecipitation of NEUROG3 transfected lysate using anti-NEUROG3 monoclonal antibody and Protein A Magnetic Bead ([U0007](#)), and immunoblotted with NEUROG3 MaxPab rabbit polyclonal antibody.

[Protocol Download](#)

ELISA

Gene Information

Entrez GeneID: [50674](#)

GeneBank Accession#: [NM_020999](#)

Protein Accession#: [NP_066279](#)

Gene Name: NEUROG3

Gene Alias: Atoh5,Math4B,bHLHa7,ngn3

Gene Description: neurogenin 3

Omim ID: [604882](#)

Gene Ontology: [Hyperlink](#)

Gene Summary: Neurogenin-3 (NEUROG3) is expressed in endocrine progenitor cells and is required for endocrine cell development in the pancreas and intestine (Wang et al., 2006 [PubMed 16855267]). It belongs to a family of basic helix-loop-helix transcription factors involved in the determination of neural precursor cells in the neuroectoderm (Gradwohl et al., 2000 [PubMed 10677506]).[supplied by OMIM]

Other OTTHUMP00000019730

Designations:

Gene Pathway

Maturity onset diabetes of the young

Related Disease

Anovulation Coronary Disease Diabetes Mellitus, Type 1 Diabetes Mellitus, Type 2
Diabetic Ketoacidosis Disease Progression Genetic Predisposition to Disease
Glucose Intolerance Hyperglycemia Hyperinsulinism

[服務條款](#) | [隱私權政策](#) | [著作及商標](#) | [網站地圖](#)

©2016 亞諾法生技股份有限公司 Abnova Corporation. 版權所有.