

GEMIN4 monoclonal antibody (M01), clone 3E1

Catalog # : H00050628-M01

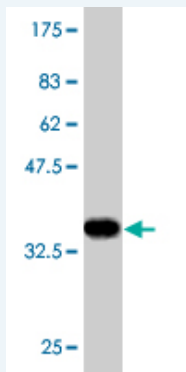
規格 : [100 ug]

[List All](#)

Specification

Product Description:	Mouse monoclonal antibody raised against a partial recombinant GEMIN4.
Immunogen:	GEMIN4 (NP_056536, 959 a.a. ~ 1057 a.a) partial recombinant protein with GST tag. MW of the GST tag alone is 26 KDa.
Sequence:	AAGPWWQGPEQDLTQEALFVYTQVFCHALHIMAMLHPEVCEPLYVLALE TLTCYETLSKTNPSVSSLLQRAHEQRFLKSIAEGIGPEERRQTLQKMSS
Host:	Mouse
Reactivity:	Human
Isotype:	IgG2b Kappa

Quality Control Testing: Antibody Reactive Against Recombinant Protein.



Western Blot detection against Immunogen (36.63 KDa) .

Storage Buffer: In 1x PBS, pH 7.4

Storage Instruction: Store at -20°C or lower. Aliquot to avoid repeated freezing and thawing.

MSDS: [Download](#)

Datasheet: [Download](#)

Applications

Western Blot (Recombinant protein)

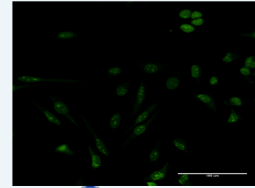
[Protocol Download](#)

Immunofluorescence

Application Image

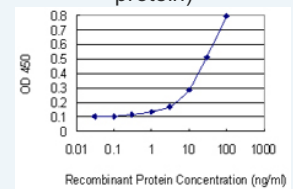
Western Blot (Recombinant protein)

Immunofluorescence



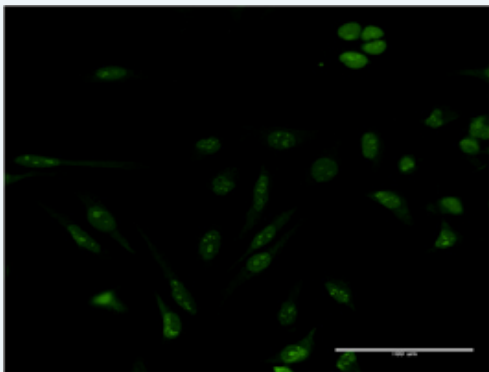
[enlarge](#)

Sandwich ELISA (Recombinant protein)



[enlarge](#)

ELISA

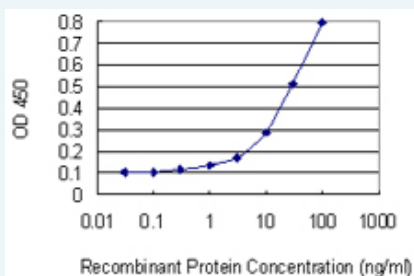


[enlarge this image](#)

Immunofluorescence of monoclonal antibody to GEMIN4 on HeLa cell . [antibody concentration 10 ug/ml]

[Protocol Download](#)

Sandwich ELISA (Recombinant protein)



Detection limit for recombinant GST tagged GEMIN4 is 1 ng/ml as a capture antibody.

[Protocol Download](#)

ELISA

Gene Information

Entrez GeneID: [50628](#)

GeneBank [NM_015721](#)
Accession#:

Protein [NP_056536](#)
Accession#:

Gene Name: GEMIN4

Gene Alias: DKFZp434B131,DKFZp434D174,HC56,HCAP1,HHRF-1,p97

Gene Description: gem (nuclear organelle) associated protein 4

Omim ID: [606969](#)

Gene Ontology: [Hyperlink](#)

Gene Summary: The product of this gene is part of a large complex localized to the cytoplasm, nucleoli, and to discrete nuclear bodies called Gemini bodies (gems). The complex functions in spliceosomal snRNP assembly in the cytoplasm, and regenerates spliceosomes required for pre-mRNA splicing in the nucleus. The encoded protein directly interacts with a DEAD box protein and several spliceosome core proteins. Alternatively spliced transcript variants have been described, but their biological validity has not been determined. [provided by RefSeq]

Other Designations: HCC-associated protein 1,component of gems 4,gemin 4

Related Disease

[Adenocarcinoma](#) [Carcinoma, Renal Cell](#) [Carcinoma, Squamous Cell](#)
[Esophageal Neoplasms](#) [Genetic Predisposition to Disease](#) [Head and Neck Neoplasms](#)
[Kidney Neoplasms](#) [Lung Neoplasms](#) [Mouth Neoplasms](#) [Neoplasm Recurrence, Local](#)
[Neoplasms, Second Primary](#) [Precancerous Conditions](#)

[服務條款](#) | [隱私權政策](#) | [著作及商標](#) | [網站地圖](#)

©2016 亞諾法生技股份有限公司 Abnova Corporation. 版權所有.