

ITSN2 (Human) Recombinant Protein (Q01)

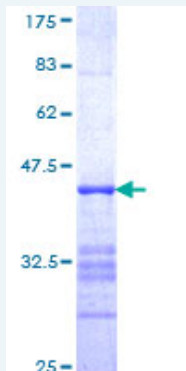
Catalog # : H00050618-Q01

規格 : [10 ug] [25 ug]

List All

Specification

| | |
|---------------------------------|---|
| Product Description: | Human ITSN2 partial ORF (NP_006268, 471 a.a. - 571 a.a.) recombinant protein with GST-tag at N-terminal. |
| Sequence: | NQKNREQEEIVRLNSKKKNLHLELEALNGKHQQISGRLQDVRLKKQTQK TELEVLDKQCDLEIMEIKQLQQELQEYQNKLIYLVPEKQLLNERIKNMQFS N |
| Host: | Wheat Germ (in vitro) |
| Theoretical MW (kDa): | 36.85 |
| Preparation Method: | <i>in vitro</i> wheat germ expression system |
| Purification: | Glutathione Sepharose 4 Fast Flow |
| Quality Control Testing: | 12.5% SDS-PAGE Stained with Coomassie Blue. |



Storage Buffer: 50 mM Tris-HCl, 10 mM reduced Glutathione, pH=8.0 in the elution buffer.

Storage Instruction: Store at -80°C. Aliquot to avoid repeated freezing and thawing.

Note: Best use within three months from the date of receipt of this protein.

MSDS: [Download](#)

Interspecies Antigen Sequence: Mouse (94); Rat (94)

Datasheet: [Download](#)

Application Image

Enzyme-linked Immunoabsorbent Assay
Western Blot (Recombinant protein)
Antibody Production
Protein Array

Applications

Enzyme-linked Immunoabsorbent Assay

Western Blot (Recombinant protein)

Antibody Production

Protein Array

Gene Information

Entrez GeneID: [50618](#)

GeneBank
Accession#: [NM_006277](#)

Protein
Accession#: [NP_006268](#)

Gene Name: [ITSN2](#)

Gene Alias: [KIAA1256](#),[PRO2015](#),[SH3D1B](#),[SH3P18](#),[SWA](#),[SWAP](#)

Gene
Description: [intersectin 2](#)

Omim ID: [604464](#)

Gene Ontology: [Hyperlink](#)

Gene Summary: This gene encodes a cytoplasmic protein which contains SH3 domains. This protein is a member of a family of proteins involved in clathrin-mediated endocytosis. Intersectin 2 is thought to regulate the formation of clathrin-coated vesicles and also may function in the induction of T cell antigen receptor (TCR) endocytosis. Alternatively spliced transcript variants have been found for this gene that encode three distinct isoforms. Additional variants have been found but their full length nature has not been determined. [provided by RefSeq]

Other
Designations: [SH3 domain protein 1B](#),[SH3P18-like WASP associated protein](#)

Related Disease

[Angina Pectoris, Variant Coronary Vasospasm Genetic Predisposition to Disease](#)

[服務條款](#) | [隱私權政策](#) | [著作及商標](#) | [網站地圖](#)

©2021 亞諾法生技股份有限公司 Abnova Corporation. 版權所有.