

IL20 monoclonal antibody (M01), clone 2H8

Catalog # : H00050604-M01

規格 : [100 ug]

List All

Specification

Product Description: Mouse monoclonal antibody raised against a partial recombinant IL20.

Immunogen: IL20 (NP_061194, 67 a.a. ~ 176 a.a) partial recombinant protein with GST tag. MW of the GST tag alone is 26 KDa.

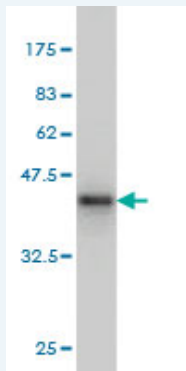
Sequence: RTESLQDTKPANRCCLLRHLLRLYLDRVFKNYQTPDHYTLRKISLANSF
LTIKKDLRLCHAHMTCHCGEEAMKKYSQILSHFEKLEPQAAVVKALGELDI
LLQWMEETE

Host: Mouse

Reactivity: Human

Isotype: IgG1 Kappa

Quality Control Testing: Antibody Reactive Against Recombinant Protein.



Western Blot detection against Immunogen (37.84 KDa) .

Storage Buffer: In 1x PBS, pH 7.4

Storage Instruction: Store at -20°C or lower. Aliquot to avoid repeated freezing and thawing.

MSDS: [Download](#)

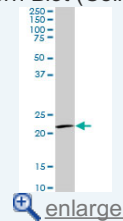
Datasheet: [Download](#)

Applications

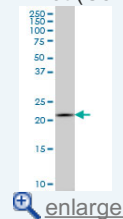
Western Blot (Cell lysate)

Application Image

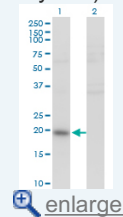
Western Blot (Cell lysate)



Western Blot (Cell lysate)

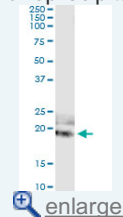


Western Blot (Transfected lysate)

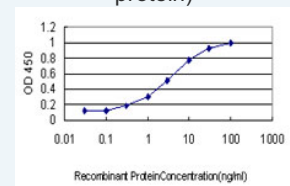


Western Blot (Recombinant protein)

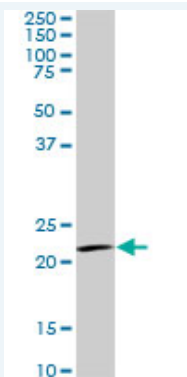
Immunoprecipitation



Sandwich ELISA (Recombinant protein)



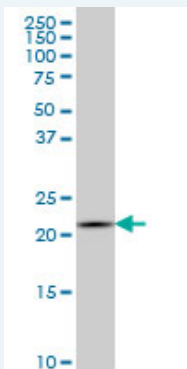
ELISA




IL20 monoclonal antibody (M01), clone 2H8. Western Blot analysis of IL20 expression in A-431 (Cat # L015V1).

 [Protocol Download](#)

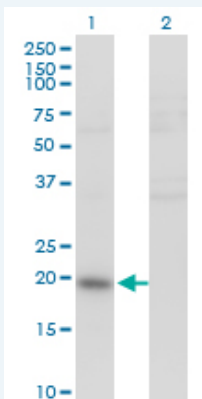
Western Blot (Cell lysate)



IL20 monoclonal antibody (M01), clone 2H8 Western Blot analysis of IL20 expression in K-562 (Cat # L009V1).

 [Protocol Download](#)


Western Blot (Transfected lysate)



Western Blot analysis of IL20 expression in transfected 293T cell line by IL20 monoclonal antibody (M01), clone 2H8.

Lane 1: IL20 transfected lysate(20.1 kDa).

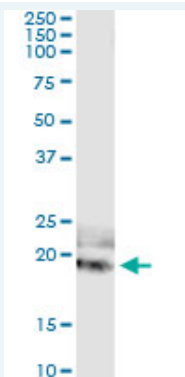
Lane 2: Non-transfected lysate.

 [Protocol Download](#)

Western Blot (Recombinant protein)

 [Protocol Download](#)

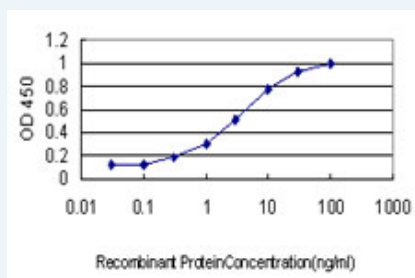
Immunoprecipitation



Immunoprecipitation of IL20 transfected lysate using anti-IL20 monoclonal antibody and Protein A Magnetic Bead (U0007), and immunoblotted with IL20 MaxPab rabbit polyclonal antibody.

[Protocol Download](#)

Sandwich ELISA (Recombinant protein)



Detection limit for recombinant GST tagged IL20 is approximately 0.3ng/ml as a capture antibody.

[Protocol Download](#)

ELISA

Gene Information

Entrez GeneID: [50604](#)

GeneBank [NM_018724](#)

Accession#:

Protein [NP_061194](#)

Accession#:

Gene Name: IL20

Gene Alias: IL-20,IL10D,MGC96907,ZCYTO10

Gene interleukin 20

Description:

Omim ID: [605619](#)

Gene Ontology: [Hyperlink](#)

Gene Summary: The protein encoded by this gene is a cytokine structurally related to interleukin 10 (IL10). This cytokine has been shown to transduce its signal through signal transducer and activator of transcription 3 (STAT3) in keratinocytes. A specific receptor for this cytokine is found to be expressed in skin and upregulated dramatically in psoriatic skin, suggesting a role for this protein in epidermal function and psoriasis. [provided by RefSeq]

Other Designations: OTTHUMP00000034617,OTTHUMP00000034618,four alpha helix cytokine

Gene Pathway

[Cytokine-cytokine receptor interaction](#) [Jak-STAT signaling pathway](#)

Related Disease

[Asthma](#) [Asthma](#) [Bronchiolitis, Viral](#) [Depressive Disorder, Major](#) [Diabetes Mellitus, Type 1](#)
[Disease Progression](#) [Genetic Predisposition to Disease](#) [Hepatitis B, Chronic](#)
[Hepatitis C, Chronic](#) [Infant, Premature, Diseases](#) [Psoriasis](#)
[Respiratory Syncytial Virus Infections](#)

[服務條款](#) | [隱私權政策](#) | [著作及商標](#) | [網站地圖](#)

©2016 亞諾法生技股份有限公司 Abnova Corporation. 版權所有.