

STOML2 (Human) Recombinant Protein (P01)

Catalog # : H00030968-P01

規格 : [2 ug]

[List All](#)

Specification

Product Description: Human STOML2 full-length ORF (NP_038470.1, 1 a.a. - 356 a.a.) recombinant protein with GST-tag at N-terminal.

Sequence: MLARAARGTGALLRGSLLASGRAPRRASSGLPRNTVWLFVPQQEAWV
VERMGRFHRILEPGLNILIPVLDRIYVQSLKEVINVPEQSAVTLDNVTLQI
DGVLYLRIMDPYKASYGVEDPEYAVTQLAQTTRMSELGKLSLDKVFRRER
ESLNASIVDAINQAADCWGIKRLRYEIKDIHVPPRVKESMQMQVEAERRKR
ATVLESEGTRESAINVAEGKKQAQILASEAEKAEQINQAAGEASAVLAKAK
AKAEAIRILAAALTQHNGDAAASLTVAEQYVSAFSLKAKDSNTILLPSNPG
DVTSMVAQAMGVYGALTKAPVPGTPDSLSSGSSRDVQGT DASLDEELD
RVKMS

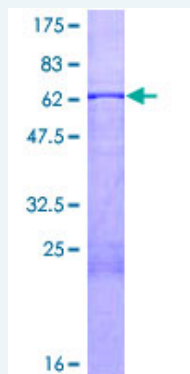
Host: Wheat Germ (in vitro)

Theoretical MW (kDa): 64.9

Preparation Method: *in vitro* wheat germ expression system

Purification: Glutathione Sepharose 4 Fast Flow

Quality Control Testing: 12.5% SDS-PAGE Stained with Coomassie Blue.



Storage Buffer: 50 mM Tris-HCl, 10 mM reduced Glutathione, pH=8.0 in the elution buffer.

Storage Instruction: Store at -80°C. Aliquot to avoid repeated freezing and thawing.

Note: Best use within three months from the date of receipt of this protein.

MSDS: [Download](#)

Datasheet: [Download](#)

Applications

Enzyme-linked Immunoabsorbent Assay

Application Image

Enzyme-linked
Immunoabsorbent Assay

Western Blot (Recombinant
protein)

Antibody Production

Protein Array

Western Blot (Recombinant protein)

Antibody Production

Protein Array

Gene Information

Entrez GeneID: [30968](#)

GeneBank Accession#: [NM_013442.1](#)

Protein Accession#: [NP_038470.1](#)

Gene Name: STOML2

Gene Alias: HSPC108,SLP-2

Gene Description: stomatin (EPB72)-like 2

Omim ID: [608292](#)

Gene Ontology: [Hyperlink](#)

Other Designations: OTTHUMP00000021320,stomatin-like 2,stomatin-like protein 2

[服務條款](#) | [隱私權政策](#) | [著作及商標](#) | [網站地圖](#)

©2016 亞諾法生技股份有限公司 Abnova Corporation. 版權所有.