

## CTAG2 monoclonal antibody (M04), clone 3H1

Catalog # : H00030848-M04

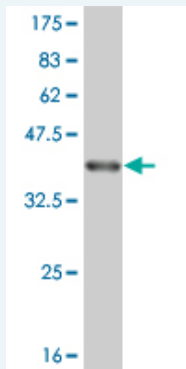
規格 : [ 100 ug ]

[List All](#)

### Specification

<b>Product Description:</b>	Mouse monoclonal antibody raised against a partial recombinant CTAG2.
<b>Immunogen:</b>	CTAG2 (NP_066274, 111 a.a. ~ 210 a.a) partial recombinant protein with GST tag. MW of the GST tag alone is 26 KDa.
<b>Sequence:</b>	RDAAPLPRPGAVLKDFTVSGNLLFMSVRDQDREGAGRMRVVWGLGS ASPEGQKARDLRTPKHKVSEQRPGTPGPPPPEGAQQDGCRCRVAFNVM FSAPHI
<b>Host:</b>	Mouse
<b>Reactivity:</b>	Human
<b>Isotype:</b>	IgG2b Kappa

**Quality Control Testing:** Antibody Reactive Against Recombinant Protein.



Western Blot detection against Immunogen (37.11 KDa) .

**Storage Buffer:** In 1x PBS, pH 7.4

**Storage Instruction:** Store at -20°C or lower. Aliquot to avoid repeated freezing and thawing.

**MSDS:** [Download](#)

**Datasheet:** [Download](#)

### Applications

**Western Blot (Recombinant protein)**

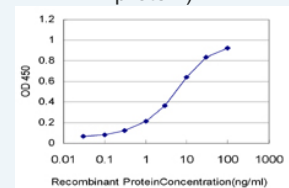
[Protocol Download](#)

**Sandwich ELISA (Recombinant protein)**

### Application Image

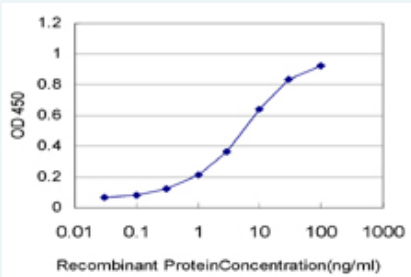
Western Blot (Recombinant protein)

Sandwich ELISA (Recombinant protein)



[enlarge](#)

ELISA



Detection limit for recombinant GST tagged CTAG2 is approximately 0.1ng/ml as a capture antibody.

 [Protocol Download](#)

## ELISA

### Gene Information

Entrez GeneID: [30848](#)

GeneBank [NM\\_020994](#)

Accession#:

Protein [NP\\_066274](#)

Accession#:

Gene Name: CTAG2

Gene Alias: CAMEL,ESO2,LAGE-1,LAGE-2b,MGC138724,MGC3803

Gene Description: cancer/testis antigen 2

Description:

Omim ID: [300396](#)

Gene Ontology: [Hyperlink](#)

Other Designations: CTL-recognized antigen on melanoma,LAGE-1a

protein,OTTHUMP00000026043,OTTHUMP00000026044

### Related Disease

[Neoplasms Stomach Neoplasms](#)

[服務條款](#) | [隱私權政策](#) | [著作及商標](#) | [網站地圖](#)

©2016 亞諾法生技股份有限公司 Abnova Corporation. 版權所有.