

## EHD2 monoclonal antibody (M01), clone 2D8

Catalog # : H00030846-M01

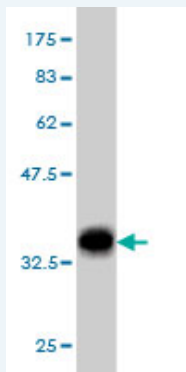
規格 : [ 100 ug ]

[List All](#)

### Specification

<b>Product Description:</b>	Mouse monoclonal antibody raised against a partial recombinant EHD2.
<b>Immunogen:</b>	EHD2 (NP_055416, 365 a.a. ~ 427 a.a) partial recombinant protein with GST tag. MW of the GST tag alone is 26 KDa.
<b>Sequence:</b>	AHDFTKFHSLKPKLLEALDEMLTHDIAKLMPLLRQEELESTEVGVQGGAF EGTHMGPFVERGP
<b>Host:</b>	Mouse
<b>Reactivity:</b>	Human
<b>Isotype:</b>	IgG1 Kappa

**Quality Control Testing:** Antibody Reactive Against Recombinant Protein.



Western Blot detection against Immunogen (32.67 KDa) .

**Storage Buffer:** In 1x PBS, pH 7.4

**Storage Instruction:** Store at -20°C or lower. Aliquot to avoid repeated freezing and thawing.

**MSDS:** [Download](#)

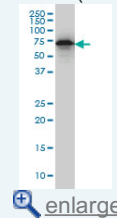
**Datasheet:** [Download](#)

### Applications

**Western Blot (Cell lysate)**

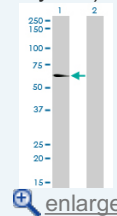
### Application Image

Western Blot (Cell lysate)



[enlarge](#)

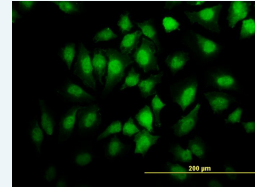
Western Blot (Transfected lysate)



[enlarge](#)

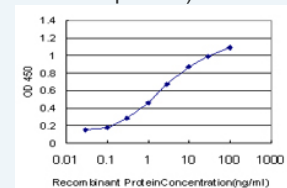
Western Blot (Recombinant protein)

Immunofluorescence



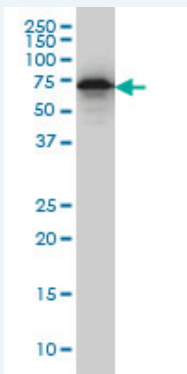
[enlarge](#)

Sandwich ELISA (Recombinant protein)



[enlarge](#)

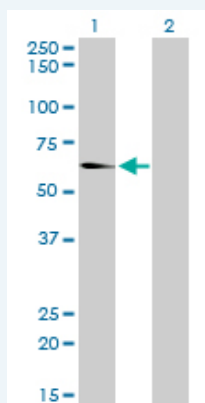
ELISA



EHD2 monoclonal antibody (M01), clone 2D8 Western Blot analysis of EHD2 expression in HeLa ( Cat # L013V1 ).

[Protocol Download](#)

#### Western Blot (Transfected lysate)



Western Blot analysis of EHD2 expression in transfected 293T cell line by EHD2 monoclonal antibody (M01), clone 2D8.

Lane 1: EHD2 transfected lysate(61.2 KDa).

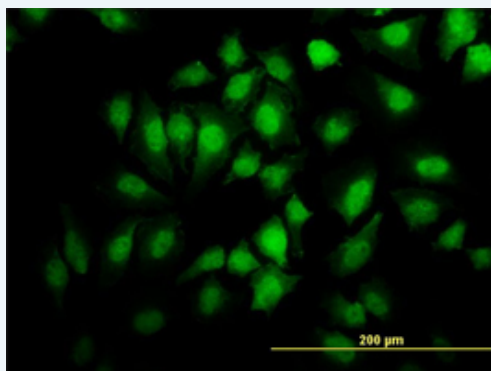
Lane 2: Non-transfected lysate.

[Protocol Download](#)

#### Western Blot (Recombinant protein)

[Protocol Download](#)

#### Immunofluorescence

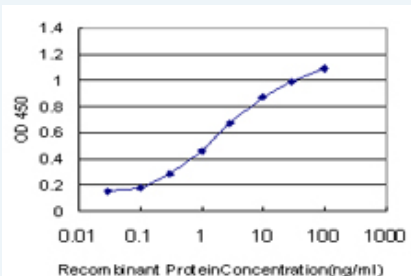


[enlarge this image](#)

Immunofluorescence of monoclonal antibody to EHD2 on HeLa cell. [antibody concentration 10 ug/ml]

[Protocol Download](#)

#### Sandwich ELISA (Recombinant protein)



Detection limit for recombinant GST tagged EHD2 is approximately 0.03ng/ml as a capture antibody.

 [Protocol Download](#)

## ELISA

### Gene Information

Entrez GeneID: [30846](#)

GeneBank [NM\\_014601](#)

Accession#:

Protein [NP\\_055416](#)

Accession#:

Gene Name: EHD2

Gene Alias: FLJ96617,PAST2

Gene Description: EH-domain containing 2

Omim ID: [605890](#)

Gene Ontology: [Hyperlink](#)

**Gene Summary:** This gene encodes a member of the EH domain-containing protein family. These proteins are characterized by a C-terminal EF-hand domain, a nucleotide-binding consensus site at the N terminus and a bipartite nuclear localization signal. The encoded protein interacts with the actin cytoskeleton through an N-terminal domain and also binds to an EH domain-binding protein through the C-terminal EH domain. This interaction appears to connect clathrin-dependent endocytosis to actin, suggesting that this gene product participates in the endocytic pathway. [provided by RefSeq]

Other Designations: EH domain containing 2

### Gene Pathway

[Endocytosis](#)