

CSEN monoclonal antibody (M01), clone 2B3-A1

Catalog # : H00030818-M01

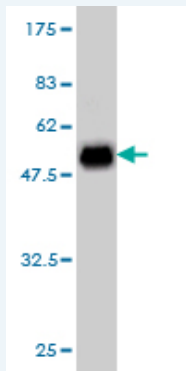
規格 : [50 ug]

[List All](#)

Specification

Product Description:	Mouse monoclonal antibody raised against a full length recombinant CSEN.
Immunogen:	CSEN (AAH12850, 1 a.a. ~ 256 a.a) full-length recombinant protein with GST tag. MW of the GST tag alone is 26 KDa.
Sequence:	MQPAKEVTKASDGSLLGDLGHTPLSKKEGIKWQRPRLSRQALMRCCLV KWLSSTAPQGSDDSELELSTVRHQPEGLDQLQAQTKFTKKELQSLY RGFKNECPTGLVDEDTFKLIYAQFFPQGDATTYAHFLNADFADGNGAI HFEDFVVGLSILLRGTVHEKWKWAFNLYDINKDGYITKEEMLAIMKSIYDM MGRHTYPILREDAPAEHVERFFEKMDRNQDGVVTIEEFLEACQKDENIMS SMQLFENVI
Host:	Mouse
Reactivity:	Human
Isotype:	IgG1 Kappa

Quality Control Testing: Antibody Reactive Against Recombinant Protein.



Western Blot detection against Immunogen (53.9 KDa) .

Storage Buffer: In 1x PBS, pH 7.4

Storage Instruction: Store at -20°C or lower. Aliquot to avoid repeated freezing and thawing.

MSDS: [Download](#)

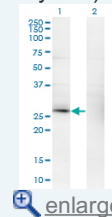
Datasheet: [Download](#)

Applications

Western Blot (Transfected lysate)

Application Image

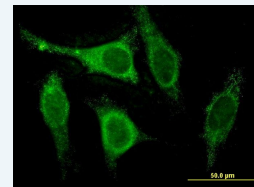
Western Blot (Transfected lysate)



[enlarge](#)

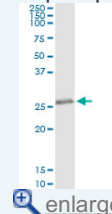
Western Blot (Recombinant protein)

Immunofluorescence



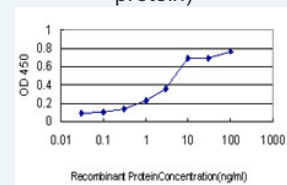
[enlarge](#)

Immunoprecipitation



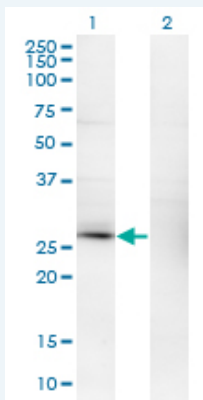
[enlarge](#)

Sandwich ELISA (Recombinant protein)




[enlarge](#)

ELISA



Western Blot analysis of KCNIP3 expression in transfected 293T cell line by CSEN monoclonal antibody (M01), clone 2B3-A1.

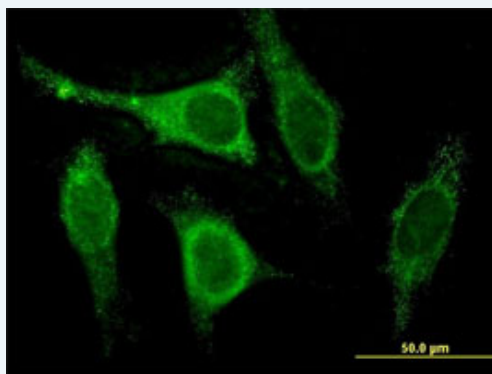
Lane 1: KCNIP3 transfected lysate (Predicted MW: 29.2 KDa).
Lane 2: Non-transfected lysate.


 [Protocol Download](#)

Western Blot (Recombinant protein)

 [Protocol Download](#)

Immunofluorescence

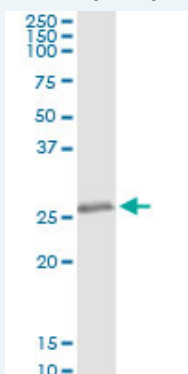


 [enlarge this image](#)

Immunofluorescence of monoclonal antibody to CSEN on HeLa cell . [antibody concentration 10 ug/ml]

 [Protocol Download](#)

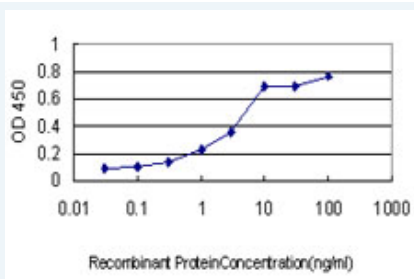
Immunoprecipitation




Immunoprecipitation of KCNIP3 transfected lysate using anti-KCNIP3 monoclonal antibody and Protein A Magnetic Bead ([U0007](#)), and immunoblotted with KCNIP3 MaxPab rabbit polyclonal antibody.

 [Protocol Download](#)

Sandwich ELISA (Recombinant protein)



Detection limit for recombinant GST tagged CSEN is approximately 0.1ng/ml as a capture antibody.

 [Protocol Download](#)

ELISA

Gene Information

Entrez GeneID: [30818](#)

GeneBank [BC012850](#)

Accession#:

Protein [AAH12850](#)

Accession#:

Gene Name: KCNIP3

Gene Alias: CSEN,DREAM,KCHIP3,MGC18289

Gene Description: Kv channel interacting protein 3, calsenilin

Omim ID: [604662](#)

Gene Ontology: [Hyperlink](#)

Gene Summary: This gene encodes a member of the family of voltage-gated potassium (Kv) channel-interacting proteins, which belong to the recoverin branch of the EF-hand superfamily. Members of this family are small calcium binding proteins containing EF-hand-like domains. They are integral subunit components of native Kv4 channel complexes that may regulate A-type currents, and hence neuronal excitability, in response to changes in intracellular calcium. The encoded protein also functions as a calcium-regulated transcriptional repressor, and interacts with presenilins. Alternatively spliced transcript variants encoding different isoforms have been described. [provided by RefSeq]

Other Designations: A-type potassium channel modulatory protein 3,DRE-antagonist modulator,Kv channel interacting protein 3,calsenilin, presenilin-binding protein, EF hand transcription factor,potassium channel interacting protein 3

Related Disease

[Disease Progression](#) [Disease Susceptibility](#) [Genetic Predisposition to Disease](#)
[HIV Infections](#) [Thyroid Neoplasms](#)