

## RAX monoclonal antibody (M06), clone 2E3

Catalog # : H00030062-M06

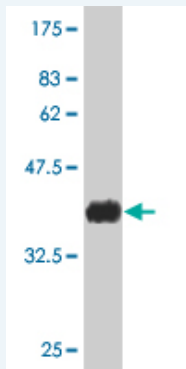
規格 : [ 100 ug ]

[List All](#)

### Specification

<b>Product Description:</b>	Mouse monoclonal antibody raised against a full length recombinant RAX
<b>Immunogen:</b>	RAX (NP_038463, 104 a.a. ~ 206 a.a) full length recombinant protein with GST tag. MW of the GST tag alone is 26 KDa.
<b>Sequence:</b>	KEPWEARPSPLPVGPATGEAKLSEEEQPKKKHRRNRTFTTYQLHEL ERAFEKSHYPDVYSREELAGKVNLPVLRVQVWFQNRRAKWRRQEKLEV SSMKLQD
<b>Host:</b>	Mouse
<b>Reactivity:</b>	Human
<b>Isotype:</b>	IgG2b Kappa

**Quality Control Testing:** Antibody Reactive Against Recombinant Protein.



Western Blot detection against Immunogen (37.33 KDa) .

**Storage Buffer:** In 1x PBS, pH 7.4

**Storage Instruction:** Store at -20°C or lower. Aliquot to avoid repeated freezing and thawing.

**MSDS:** [Download](#)

**Datasheet:** [Download](#)

### Applications

**Western Blot (Recombinant protein)**

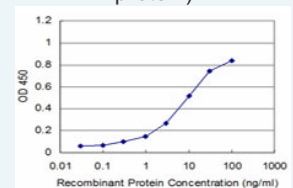
[Protocol Download](#)

**Sandwich ELISA (Recombinant protein)**

### Application Image

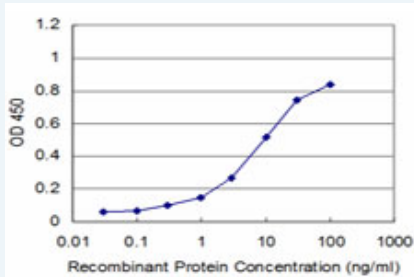
Western Blot (Recombinant protein)

Sandwich ELISA (Recombinant protein)




[enlarge](#)

ELISA



Detection limit for recombinant GST tagged RAX is approximately 1ng/ml as a capture antibody.

 [Protocol Download](#)

## ELISA

### Gene Information

**Entrez GeneID:** [30062](#)

**GeneBank** [NM\\_013435](#)

**Accession#:**

**Protein** [NP\\_038463](#)

**Accession#:**

**Gene Name:** RAX

**Gene Alias:** MCOP3,RX

**Gene Description:** retina and anterior neural fold homeobox

**Omim ID:** [601881](#)

**Gene Ontology:** [Hyperlink](#)

**Gene Summary:** Development of the vertebrate eye requires a series of steps including specification of the anterior neural plate, evagination of the optic vesicles from the ventral forebrain, and the cellular differentiation of the lens and retina. Homeobox-containing genes, including RAX, play a critical role in vertebrate and invertebrate eye formation (Mathers et al., 1997 [PubMed 9177348]).[supplied by OMIM]

**Other Designations:** retinal homeobox protein

### Related Disease

[Anophthalmos Coloboma](#) [Genetic Predisposition to Disease](#) [Microphthalmos](#)