

TBX21 monoclonal antibody (M09), clone 1D12

Catalog # : H00030009-M09

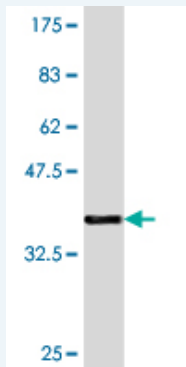
規格 : [100 ug]

List All

Specification

Product Description:	Mouse monoclonal antibody raised against a partial recombinant TBX21.
Immunogen:	TBX21 (AAH39739.1, 387 a.a. ~ 486 a.a) partial recombinant protein with GST tag. MW of the GST tag alone is 26 KDa.
Sequence:	LGAPRDHSYEAEFRAVSMKPAFLPSAPGPTMSYYRGQEVLPAGAGWPV APQYPPKMGPASWFRPMRTLPMEPGGGSEGRGPEDQGPPLVWTEIA PIRPE
Host:	Mouse
Reactivity:	Human
Isotype:	IgG2a Kappa

Quality Control Testing: Antibody Reactive Against Recombinant Protein.



Western Blot detection against Immunogen (36.63 KDa) .

Storage Buffer: In 1x PBS, pH 7.4

Storage Instruction: Store at -20°C or lower. Aliquot to avoid repeated freezing and thawing.

MSDS: [Download](#)

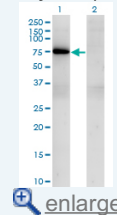
Datasheet: [Download](#)

Applications

Western Blot (Transfected lysate)

Application Image

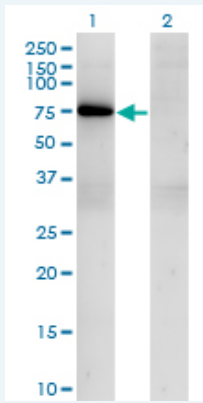
Western Blot (Transfected lysate)



[enlarge](#)

Western Blot (Recombinant protein)

ELISA



Western Blot analysis of TBX21 expression in transfected 293T cell line by TBX21 monoclonal antibody (M09), clone 1D12.

Lane 1: TBX21 transfected lysate(58.3 KDa).
Lane 2: Non-transfected lysate.

 [Protocol Download](#)

Western Blot (Recombinant protein)

 [Protocol Download](#)

ELISA

Gene Information

Entrez GeneID: [30009](#)

GeneBank [BC039739](#)
Accession#:

Protein [AAH39739.1](#)
Accession#:

Gene Name: TBX21

Gene Alias: T-PET, T-bet, TBET, TBLYM

Gene T-box 21
Description:

Omim ID: [208550](#), [604895](#)

Gene Ontology: [Hyperlink](#)

Gene Summary: This gene is a member of a phylogenetically conserved family of genes that share a common DNA-binding domain, the T-box. T-box genes encode transcription factors involved in the regulation of developmental processes. This gene is the human ortholog of mouse Tbx21/Tbet gene. Studies in mouse show that Tbx21 protein is a Th1 cell-specific transcription factor that controls the expression of the hallmark Th1 cytokine, interferon-gamma (IFNG). Expression of the human ortholog also correlates with IFNG expression in Th1 and natural killer cells, suggesting a role for this gene in initiating Th1 lineage development from naive Th precursor cells. [provided by RefSeq]

Other Designations: T-box expressed in T cells, T-cell-specific T-box transcription factor

Related Disease

[Arthritis, Rheumatoid](#) [Asthma](#) [Asthma](#) [Bronchial Hyperreactivity](#) [Bronchiolitis](#), [Viral](#) [Cleft Lip](#) [Cleft Palate](#) [Depressive Disorder](#), [Major](#) [Diabetes Mellitus](#), [Type 1](#) [Drug Hypersensitivity](#) [Genetic Predisposition to Disease](#) [Hepatitis B Hypersensitivity](#) [Hypersensitivity](#), [Immediate Infant](#), [Premature](#), [Diseases](#) [Inflammation](#) [Lupus Erythematosus](#), [Systemic](#)

[服務條款](#) | [隱私權政策](#) | [著作及商標](#) | [網站地圖](#)

©2016 亞諾法生技股份有限公司 Abnova Corporation. 版權所有.