

ERO1L monoclonal antibody (M01), clone 4G3

Catalog # : H00030001-M01

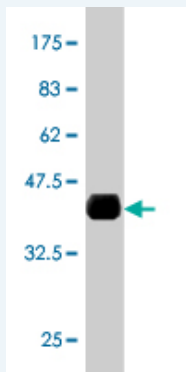
規格 : [100 ug]

[List All](#)

Specification

Product Description:	Mouse monoclonal antibody raised against a partial recombinant ERO1L.
Immunogen:	ERO1L (NP_055399, 90 a.a. ~ 178 a.a) partial recombinant protein with GST tag. MW of the GST tag alone is 26 KDa.
Sequence:	DISQCRRRDCAVKPCQSDEVDPGIKSASYKYSEEANNLIEECEQAERLGA VDESLSEETQKAVLQWTKHDDSSDNFCEADDIQSPEAEY
Host:	Mouse
Reactivity:	Human, Rat
Isotype:	IgG2b Kappa

Quality Control Testing: Antibody Reactive Against Recombinant Protein.



Western Blot detection against Immunogen (35.53 KDa) .

Storage Buffer: In 1x PBS, pH 7.4

Storage Instruction: Store at -20°C or lower. Aliquot to avoid repeated freezing and thawing.

MSDS: [Download](#)

Interspecies: Mouse (91%); Rat (91%)

Antigen Sequence:

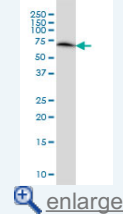
Datasheet: [Download](#)

Publication Reference

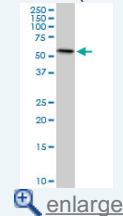
- [ERO1 \$\alpha\$ promotes testosterone secretion in hCG-stimulated mouse Leydig cells via activation of the PI3K/AKT/mTOR signaling pathway.](#)
Chen F, Wang Y, Liu Q, Hu J, Jin J, Ma Z, Zhang J. J Cell Physiol. 2020 Jan 28. doi: 10.1002/jcp.29498. [Epub ahead of print]
- [Combined expression of protein disulfide isomerase and endoplasmic reticulum oxidoreductin 1- \$\alpha\$ is a poor prognostic marker for non-small cell lung cancer.](#)

Application Image

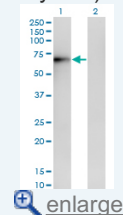
Western Blot (Cell lysate)



Western Blot (Cell lysate)

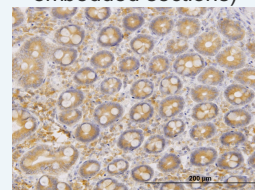


Western Blot (Transfected lysate)

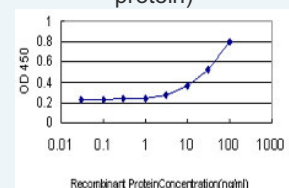


Western Blot (Recombinant protein)

Immunohistochemistry (Formalin/PFA-fixed paraffin-embedded sections)



Sandwich ELISA (Recombinant protein)



ELISA

Kim KM, An AR, Park HS, Jang KY, Moon WS, Kang MJ, Lee YC, Ku JH, Chung MJ. *Oncol Lett*. 2018 Nov;16(5):5753-5760. doi: 10.3892/ol.2018.9339. Epub 2018 Aug 21.

3. Alleviation of Hippocampal Endoplasmic Reticulum Stress by *Allomyrina dichotoma* Larvae Extract.

Kim J, Haque MN, Goo TW, Moon IS. *Am J Chin Med*. 2018;46(3):633-650. doi: 10.1142/S0192415X18500337. Epub 2018 Mar 29.

4. Central Administration of 1-Deoxynojirimycin Attenuates Hypothalamic Endoplasmic Reticulum Stress and Regulates Food Intake and Body Weight in Mice with High-Fat Diet-Induced Obesity.

Kim J, Yun EY, Quan FS, Park SW, Goo TW. *Evid Based Complement Alternat Med*. 2017;2017:3607089. doi: 10.1155/2017/3607089. Epub 2017 Jul 17.

5. Identification and characterization of potential biomarkers by quantitative tissue proteomics of primary lung adenocarcinoma.

Hsu CH, Hsu CW, Hsueh C, Wang CL, Wu YC, Wu CC, Liu CC, Yu JS, Chang YS, Yu CJ. *Mol Cell Proteomics*. 2016 May 9. [Epub ahead of print]

6. Cancer-associated oxidoreductase ERO1- α drives the production of VEGF via oxidative protein folding and regulating the mRNA level.

Tanaka T, Kutomi G, Kajiwara T, Kukita K, Kochin V, Kanaseki T, Tsukahara T, Hirohashi Y, Torigoe T, Okamoto Y, Hirata K, Sato N, Tamura Y. *Br J Cancer*. 2016 Apr 21. [Epub ahead of print]

7. *Allomyrina Dichotoma* Larvae Regulate Food Intake and Body Weight in High Fat Diet-Induced Obese Mice Through mTOR and Mapk Signaling Pathways.

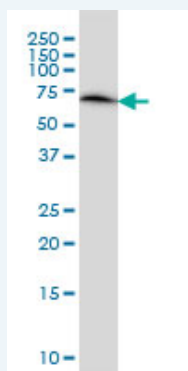
Kim J, Yun EY, Park SW, Goo TW, Seo M. *Nutrients*. 2016 Feb 18;8(2).

8. ERO1- α and PDIs constitute a hierarchical electron transfer network of endoplasmic reticulum oxidoreductases.


Araki K, Iemura S, Kamiya Y, Ron D, Kato K, Natsume T, Nagata K. *J Cell Biol*. 2013 Sep 16;202(6):861-74.

Applications

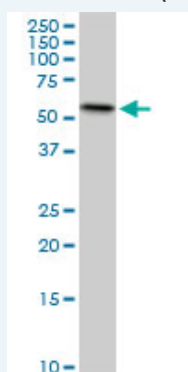
Western Blot (Cell lysate)



ERO1L monoclonal antibody (M01), clone 4G3 Western Blot analysis of ERO1L expression in HeLa (Cat # L013V1).

 [Protocol Download](#)

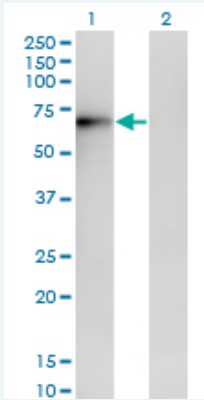
Western Blot (Cell lysate)



ERO1L monoclonal antibody (M01), clone 4G3. Western Blot analysis of ERO1L expression in PC-12 (Cat # L012V1).

 [Protocol Download](#)

Western Blot (Transfected lysate)



Western Blot analysis of ERO1L expression in transfected 293T cell line by ERO1L monoclonal antibody (M01), clone 4G3.

Lane 1: ERO1L transfected lysate (54 kDa).

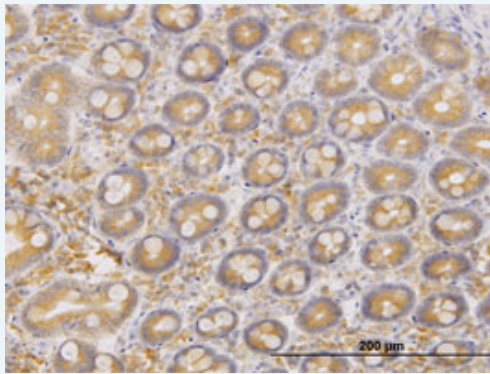
Lane 2: Non-transfected lysate.

[Protocol Download](#)

Western Blot (Recombinant protein)

[Protocol Download](#)

Immunohistochemistry (Formalin/PFA-fixed paraffin-embedded sections)

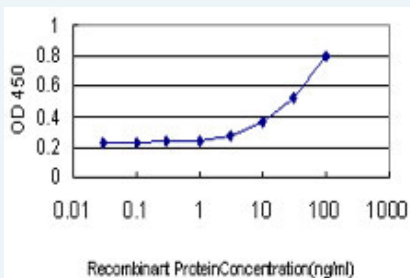


[enlarge this image](#)

Immunoperoxidase of monoclonal antibody to ERO1L on formalin-fixed paraffin-embedded human small intestine. [antibody concentration 1.5 μg/ml]

[Protocol Download](#)

Sandwich ELISA (Recombinant protein)



Detection limit for recombinant GST tagged ERO1L is approximately 3 ng/ml as a capture antibody.

[Protocol Download](#)

ELISA

Gene Information

Entrez GeneID: [30001](#)

GeneBank [NM_014584](#)

Accession#:

Protein [NP_055399](#)

Accession#:

Gene Name: ERO1L

Gene Alias: ERO1-alpha

Gene Description: ERO1-like (S. cerevisiae)

Gene Ontology: [Hyperlink](#)

Other Designations: ERO1-like

Gene Pathway

[Vibrio cholerae infection](#)

Related Disease

[Tobacco Use Disorder](#)

[服務條款](#) | [隱私權政策](#) | [著作及商標](#) | [網站地圖](#)

©2020 亞諾法生技股份有限公司 Abnova Corporation. 版權所有.