

## DSE monoclonal antibody (M03), clone 6D4

產品編號 # : H00029940-M03

規格 : [ 100 ug ]

[List All](#)

### Specification

**Product Description:** Mouse monoclonal antibody raised against a partial recombinant DSE.

**Immunogen:** DSE (NP\_037484, 574 a.a. ~ 673 a.a) partial recombinant protein with GST tag. MW of the GST tag alone is 26 KDa.

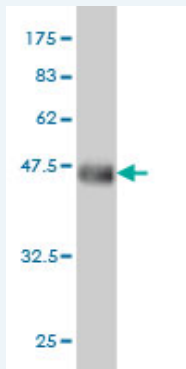
**Sequence:** LG EESPLETAASFFHNVDPFEETVWDGVHGAFIRQRDGLYKMYWMDD  
TGYSEKATFASVTYPRGYNGTNYVNVTMHLRSPITRAAYLFIGPSIDV  
QS

**Host:** Mouse

**Reactivity:** Human

**Isotype:** IgG2a Kappa

**Quality Control Testing:** Antibody Reactive Against Recombinant Protein.



Western Blot detection against Immunogen (36.74 KDa) .

**Storage Buffer:** In 1x PBS, pH 7.4

**Storage Instruction:** Store at -20°C or lower. Aliquot to avoid repeated freezing and thawing.

**MSDS:** [Download](#)

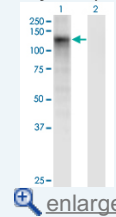
**Datasheet:** [Download](#)

### Applications

Western Blot (Transfected lysate)

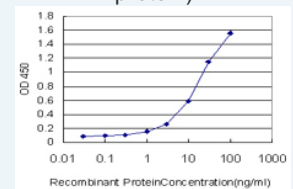
### Application Image

Western Blot (Transfected lysate)

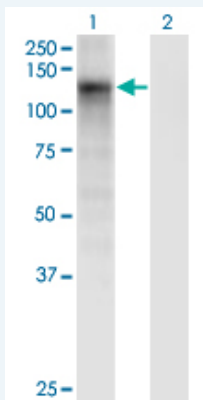


Western Blot (Recombinant protein)

Sandwich ELISA (Recombinant protein)



ELISA



Western Blot analysis of DSE expression in transfected 293T cell line by DSE monoclonal antibody (M03), clone 6D4.

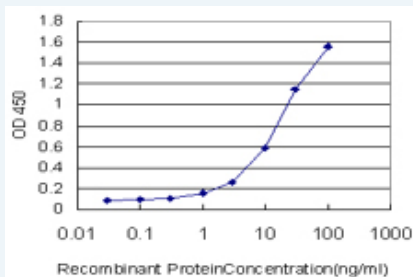
Lane 1: DSE transfected lysate (Predicted MW: 109.8 KDa).  
Lane 2: Non-transfected lysate.

[Protocol Download](#)

### Western Blot (Recombinant protein)

[Protocol Download](#)

### Sandwich ELISA (Recombinant protein)



Detection limit for recombinant GST tagged DSE is approximately 0.3ng/ml as a capture antibody.

[Protocol Download](#)

### ELISA

### Gene Information

Entrez GeneID: [29940](#)

GeneBank Accession#: [NM\\_013352](#)

Protein Accession#: [NP\\_037484](#)

Gene Name: DSE

Gene Alias: DSEPI,SART2

Gene Description: dermatan sulfate epimerase

Omim ID: [605942](#)

Gene Ontology: [Hyperlink](#)

**Gene Summary:** The protein encoded by this gene is a tumor-rejection antigen. This antigen possesses tumor epitopes capable of inducing HLA-A24-restricted and tumor-specific cytotoxic T lymphocytes in cancer patients and may be useful for specific immunotherapy. This gene product is localized to the endoplasmic reticulum. Two transcript variants encoding

the same protein have been found for this gene. [provided by RefSeq

---

**Other** OTTHUMP00000017059,OTTHUMP00000040406,squamous cell  
**Designations:** carcinoma antigen recognized by T cells 2

---

#### Gene Pathway

---

[Chondroitin sulfate biosynthesis](#)

---

[服務條款](#) | [隱私權政策](#) | [著作及商標](#) | [網站地圖](#)

©2016 亞諾法生技股份有限公司 Abnova Corporation. 版權所有.