

## SEC61A1 (Human) Recombinant Protein (P01)

Catalog # : H00029927-P01

規格 : [ 2 ug ]

[List All](#)

### Specification

**Product Description:** Human SEC61A1 full-length ORF ( AAH02951.1, 1 a.a. - 423 a.a.) recombinant protein with GST-tag at N-terminal.

**Sequence:** MSSDSADPFYWMRVILASNRGTLMELGISPIVTSGLIMQLLAGAKIIEVGD  
TPKDRALFNGAQKLFGMITIGQSIVYVMTGMYGDPSEMGAGICLLITIQLF  
VAGLIVLLLDELLQKGYGLGSGISLFIATNICETIWKAFSPTTVNTGRGM  
EFEGAIILFHLLATRTRDKVRALREAFYRQNLPLMNLIAIFVFAVVIYFQ  
GFRVDLPIKSARYRGQYNTYPIKLFYTSNIPILQSALVSNLYVISQMLSARF  
SGNLLVSLGTSWSDTSSGGPARAYPVGGLCYLSPPEFSGVLEDPVH  
AVVIYVFMLGSCAFFSKTWIEVSGSSAKDVAKQLKEQQMVMRGRHRETS  
MVHELNRYPITAAAFGGLCIGALSVLADFLGAIGSGTGILLAVTIYQYFEIF  
VKEQSEVGSMAALLF

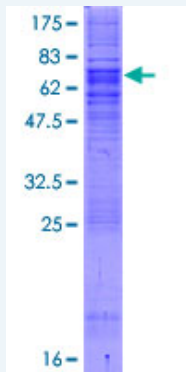
**Host:** Wheat Germ (in vitro)

**Theoretical MW (kDa):** 72.4

**Preparation Method:** *in vitro* wheat germ expression system

**Purification:** Glutathione Sepharose 4 Fast Flow

**Quality Control Testing:** 12.5% SDS-PAGE Stained with Coomassie Blue.



**Storage Buffer:** 50 mM Tris-HCl, 10 mM reduced Glutathione, pH=8.0 in the elution buffer.

**Storage Instruction:** Store at -80°C. Aliquot to avoid repeated freezing and thawing.

**Note:** Best use within three months from the date of receipt of this protein.

**MSDS:** [Download](#)

**Datasheet:** [Download](#)

### Applications

Enzyme-linked Immunoabsorbent Assay

### Application Image

Enzyme-linked Immunoabsorbent Assay

Western Blot (Recombinant protein)

Antibody Production

Protein Array

---

**Western Blot (Recombinant protein)**

---

**Antibody Production**

---

**Protein Array**

---

**Gene Information**

---

**Entrez GeneID:** [29927](#)**GeneBank  
Accession#:** [BC002951.1](#)**Protein  
Accession#:** [AAH02951.1](#)**Gene Name:** SEC61A1**Gene Alias:** HSEC61,SEC61,SEC61A**Gene  
Description:** Sec61 alpha 1 subunit (S. cerevisiae)**Omim ID:** [609213](#)**Gene Ontology:** [Hyperlink](#)

**Gene Summary:** The protein encoded by this gene belongs to the SECY/SEC61- alpha family. It appears to play a crucial role in the insertion of secretory and membrane polypeptides into the endoplasmic reticulum. This protein found to be tightly associated with membrane-bound ribosomes, either directly or through adaptor proteins. This gene encodes an alpha subunit of the heteromeric SEC61 complex, which also contains beta and gamma subunits. [provided by RefSeq]

**Other  
Designations:** Sec61 alpha 1 subunit,Sec61 alpha-1,protein transport protein SEC61 alpha subunit,sec61 homolog**Gene Pathway**

---

[Vibrio cholerae infection](#)