

NME7 (Human) Recombinant Protein (P01)

Catalog # : H00029922-P01

規格 : [10 ug] [25 ug]

[List All](#)

Specification

Product Description: Human NME7 full-length ORF (NP_037462.1, 1 a.a. - 376 a.a.) recombinant protein with GST-tag at N-terminal.

Sequence: MNHSERFVFIAEWYDPNASLLRRYELLFYPGDGSVEMHDVKNHRTFLKR
TKYDNLHLEDLFIGNKVNVFSRQLVLIDYGDQYARQLGSRKEKTLALIKP
DAISKAGEIIEINKAGFTITKLKMMMLSRKEALDFHVDHQSRPFFNELIQFIT
TGPIIAMEILRDDAICEWKRLGVPANSGVARTDASESIRALFGTDGIRNAAH
GPDSFASAAREMELFFSSGGCGPANTAKFTNCTCCIVKPHAVSEGLLG
KILMAIRDAGFEISAMQMFNMDRVNVEEFYEVYKGVVTEYHDMVTEMYS
GPCVAMEIQQNNATKTFREFCGPADPEIARHLRPGTLRAIFGKTKIQNAV
HCTDLPEDGLLEVQYFFKILDN

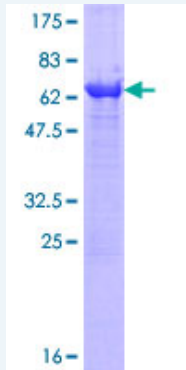
Host: Wheat Germ (in vitro)

Theoretical MW (kDa): 68.9

Preparation Method: *in vitro* wheat germ expression system

Purification: Glutathione Sepharose 4 Fast Flow

Quality Control Testing: 12.5% SDS-PAGE Stained with Coomassie Blue.



Storage Buffer: 50 mM Tris-HCl, 10 mM reduced Glutathione, pH=8.0 in the elution buffer.

Storage Instruction: Store at -80°C. Aliquot to avoid repeated freezing and thawing.

Note: Best use within three months from the date of receipt of this protein.

MSDS: [Download](#)

Datasheet: [Download](#)

Applications

Enzyme-linked Immunoabsorbent Assay

Application Image

Enzyme-linked Immunoabsorbent Assay

Western Blot (Recombinant protein)

Antibody Production

Protein Array

Western Blot (Recombinant protein)

Antibody Production

Protein Array

Gene Information

Entrez GeneID: [29922](#)

GeneBank Accession#: [NM_013330.3](#)

Protein Accession#: [NP_037462.1](#)

Gene Name: NME7

Gene Alias: FLJ37194,nm23-H7

Gene Description: non-metastatic cells 7, protein expressed in (nucleoside-diphosphate kinase)

Gene Ontology: [Hyperlink](#)

Other Designations: OTTHUMP00000032536,nucleoside-diphosphate kinase 7

Gene Pathway

[Metabolic pathways](#) [Purine metabolism](#) [Pyrimidine metabolism](#)

Related Disease

[Celiac Disease](#) [Genetic Predisposition to Disease](#) [Hypertension](#) [Osteoporosis](#)
[Tobacco Use Disorder](#)
