

## SNX15 293T Cell Transient Overexpression Lysate(Denatured)

Catalog # : H00029907-T01

規格 : [ 100 uL ]

List All

### Specification

**Transfected Cell Line:** 293T

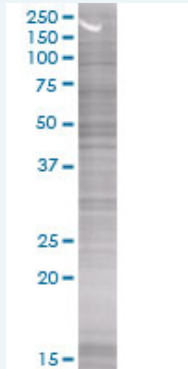
**Plasmid:** pCMV-SNX15 full-length

**Host:** Human

**Theoretical MW (kDa):** 37.73

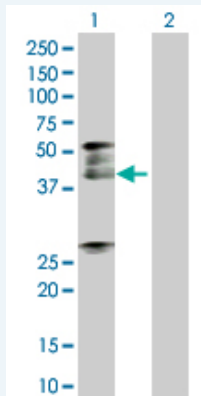
**Quality Control Testing:** Transient overexpression cell lysate was tested with Anti-SNX15 antibody (H00029907-B01) by Western Blots.

#### SDS-PAGE Gel



SNX15 transfected lysate.

#### Western Blot



Lane 1: SNX15 transfected lysate ( 37.62 KDa)

Lane 2: Non-transfected lysate.

**Storage Buffer:** 1X Sample Buffer (50 mM Tris-HCl, 2% SDS, 10% glycerol, 300 mM 2-mercaptoethanol, 0.01% Bromophenol blue)

**Storage Instruction:** Store at -80°C. Aliquot to avoid repeated freezing and thawing.

**MSDS:**  [Download](#)

### Applications

### Application Image

Western Blot

## Western Blot

### Gene Information

Entrez GeneID: [29907](#)

GeneBank  
Accession#: [BC009897](#)

Protein  
Accession#: [AAH09897](#)

Gene Name: SNX15

Gene Alias: HSAF001435

Gene  
Description: sorting nexin 15

Omim ID: [605964](#)

Gene Ontology: [Hyperlink](#)

**Gene Summary:** This gene encodes a member of the sorting nexin family. Members of this family contain a phox (PX) domain, which is a phosphoinositide binding domain, and are involved in intracellular trafficking. Overexpression of this gene results in a decrease in the processing of insulin and hepatocyte growth factor receptors to their mature subunits. This decrease is caused by the mislocalization of furin, the endoprotease responsible for cleavage of insulin and hepatocyte growth factor receptors. This protein is involved in endosomal trafficking from the plasma membrane to recycling endosomes or the trans-Golgi network. This gene encodes two transcript variants encoding distinct isoforms. [provided by RefSeq]

Other  
Designations: OTTHUMP00000035515,clone iota unknown protein

[服務條款](#) | [隱私權政策](#) | [著作及商標](#) | [網站地圖](#)

©2016 亞諾法生技股份有限公司 Abnova Corporation. 版權所有.